

EMBARGOED UNTIL 11.30 A.M. 26 SEPTEMBER 1984

**LABOUR FORCE STATUS AND EDUCATIONAL  
ATTAINMENT, AUSTRALIA**

**FEBRUARY 1984**

**R. J. CAMERON**

**Australian Statistician**

© Commonwealth of Australia 1984

---

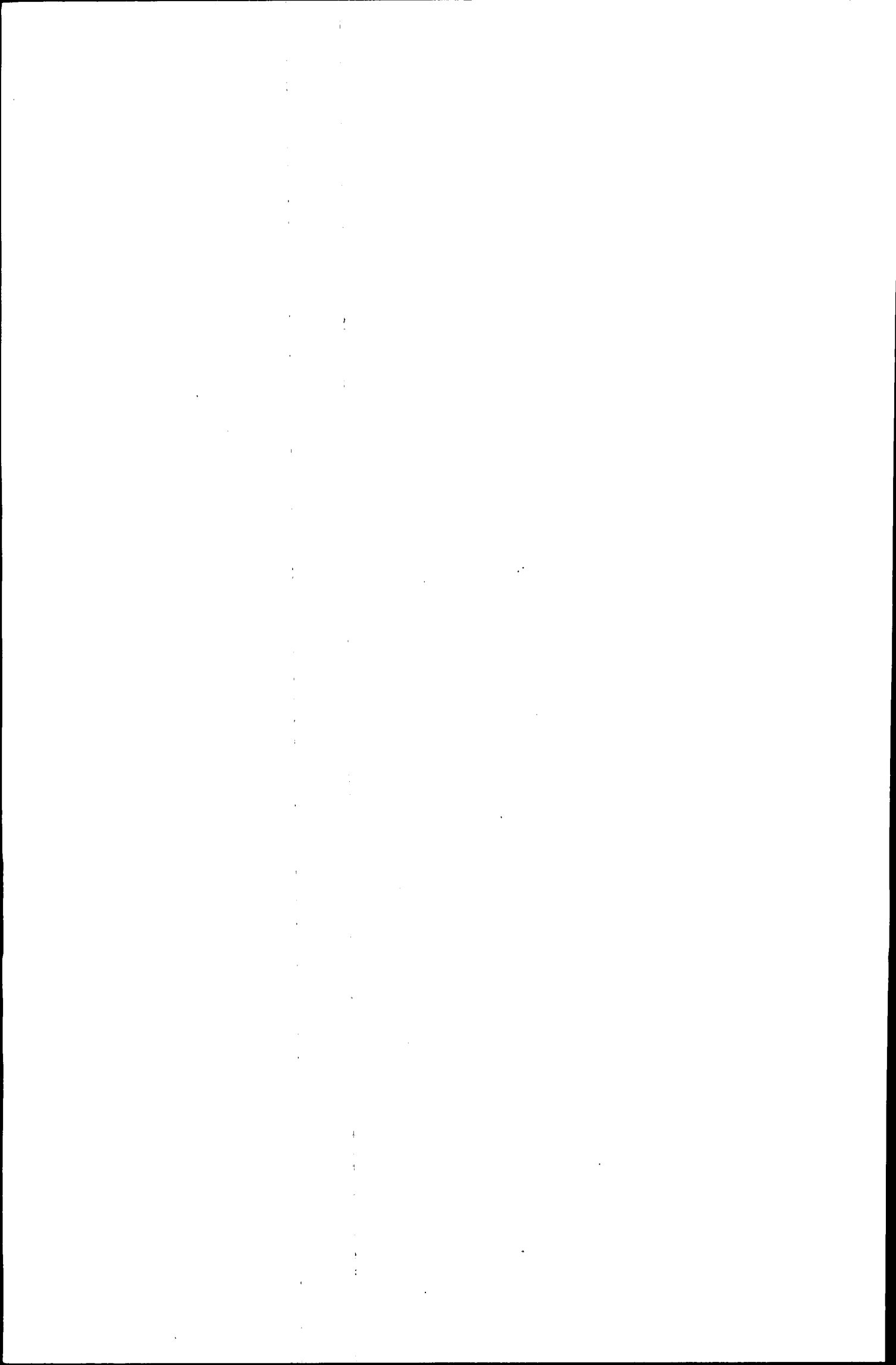
PHONE INQUIRIES *for more information about these statistics*—contact Mr Allan Nicholls on Canberra (062) 52 6504 or any of our State offices.  
*other inquiries including copies of publications*—contact Information Services on Canberra (062) 52 6627 or in any of our State offices.

MAIL INQUIRIES *write to* Information Services, ABS, P.O. Box 10, Belconnen, A.C.T. 2616 or any of our State offices.

---

## CONTENTS

<i>Table</i>	<i>Page</i>
.. Explanatory notes	1
.. Summary of findings	3
 <b>Summary of survey results 1980 to 1984</b>	
Educational attainment—	
1    Labour force status	7
2    Unemployment rates, average and median durations of unemployment	8
 <b>Civilian population aged 15 and over</b>	
Educational attainment—	
3    Labour force status	9
4    Age	10
5    Family status	11
Main field of study, age and labour force status—	
6    Persons with a degree or equivalent qualification	12
7    Persons with a trade or technical qualification	13
 <b>Persons in the labour force</b>	
Educational attainment—	
8    Labour force status and full-time or part-time status	14
 <b>Employed persons</b>	
Educational attainment—	
9    Industry	15
10   Occupation	16
11   Industry and occupation	17
12   Age	18
 <b>Unemployed persons</b>	
Educational attainment—	
13   Age	19
14   Duration of current period of unemployment	20
 <b>Persons not in the labour force</b>	
Educational attainment—	
15   Age	21
16   Major activity and whether in the labour force in the last 12 months	22
.. Technical note	23



## EXPLANATORY NOTES

### Introduction

In association with the February 1984 labour force survey conducted throughout Australia, persons aged fifteen years and over were asked about their highest educational qualification. For persons with post-school qualifications, the information sought included field of study, and for those who did not complete their schooling, it included the age at which they left school.

2. During the two weeks beginning Monday 6 February, 1984, specially trained interviewers asked the questions of a sub-sample of 52,000 of the 72,000 respondents in the February labour force survey.

3. A Preliminary publication containing a summary of the results was issued on 2 July 1984. Preliminary estimates from the next survey of labour force status and educational attainment will be published in the next edition of that publication. Results of similar surveys, the first conducted in February 1979 have been published in *Labour Force Status and Educational Attainment, Australia* (6235.0).

### Scope

4. This supplementary survey to the monthly labour force survey includes all civilians aged fifteen years and over except:

- (a) certain diplomatic personnel of overseas governments, customarily excluded from census and estimated populations;
- (b) overseas residents in Australia;
- (c) dependants of non-Australian defence forces personnel stationed in Australia;
- (d) students boarding at school, some patients in hospitals and sanatoria and inmates of jails, reformatories etc.

### Definitions

5. Definitions of the principal labour force categories appearing in this publication are given in *The Labour Force, Australia* (6203.0), but it should be noted that there are slight differences in the estimates for some labour force categories shown in these publications. This is due to the different sizes of the samples used and the inability to obtain from a small number of persons the additional information required for the educational qualifications survey. Although the estimation procedures take account of these factors, estimates for some characteristics will be affected.

6. *Persons with a post-school qualification* are those who have left school and answer 'Yes' to the question: 'Since leaving school have you obtained a certificate, diploma, degree or any other qualification?'

7. *Classification of post-school qualifications.* Respondents indicate which one of the following groups best describes their highest qualification:

- (a) *Degree or equivalent:* a bachelor degree (including honours), a graduate or post-graduate diploma, masters degree or a doctorate;
- (b) *Trade, technical:* completion of an approved trade/technician apprenticeship or training course, other certificate or diploma in secretarial or business studies, administration, teaching, nursing, etc.;
- (c) *Other:* completion of other post-secondary education e.g. adult education, preparatory/bridging course or hobby course.

8. *Classification of field of study.* Respondents with a degree, trade or technical qualification (i.e. (a) or (b) in paragraph 7) indicate the field of study for their highest qualification (See Tables 6 and 7).

9. *Highest level of secondary school available* refers to the highest level of secondary schooling (or equivalent) offered by the education system at the time the respondent left school.

10. *Still at school.* Current school attendance is recorded only for persons aged fifteen to twenty years.

### Population benchmarks

11. Following the change in official population estimates to a place of usual residence basis after the 1981 Census, the population benchmarks used in this survey are compiled according to place of usual residence. For an explanation of the new conceptual basis of population estimates see *The Labour Force, Australia* (6203.0).

12. The change from 1976 Population Census based benchmarks to 1981 Population Census based benchmarks has had little effect on the movement in the estimates between the February 1983 and February 1984 surveys.

### Comparability of the estimates

13. Educational attainment of persons not in the labour force is not available for the February 1979, 1980 and 1981 surveys which only covered persons in the labour force.

14. Estimates in this series are not strictly comparable with those from the population censuses due to differences in questions and coding methodology.

### Reliability of the estimates

15. Estimates in this publication are subject to two sources of error:

- (a) *sampling error*: since the estimates are based on information obtained from occupants of a sample of dwellings, they may differ from the figures that would have been produced if all dwellings had been included in the survey. More information on this topic is given in the Technical note.
- (b) *non-sampling error*: inaccuracies may occur because of imperfections in reporting by interviewers and respondents and errors made in the coding and processing of data. These inaccuracies may occur in any enumeration, whether it be a full count or a sample. Every effort is made to reduce the non-sampling error to a minimum by careful design of questionnaires, intensive training and supervision of interviewers and efficient operating procedures.

#### **Related publications**

16. Other ABS publications which may be of interest include:

*The Labour Force, Australia*(6203.0)—issued monthly

*Transition from Education to Work, Australia, May 1983* (6227.0)

17. Current publications produced by the ABS are listed in the *Catalogue of Publications, Australia*(1101.0). The ABS also issues, on Tuesdays and Fridays, a *Publications Advice*(1105.0) which lists publications to be released in the next few days. The Catalogue and Publications Advice are available from any ABS office.

#### **Symbols and other usages**

- \* subject to sampling variability too high for most practical uses. See paragraph 15 above.
- n.e.c. not elsewhere classified
- .. not applicable

18. Because figures have been rounded, discrepancies may occur between sums of the component items and totals.

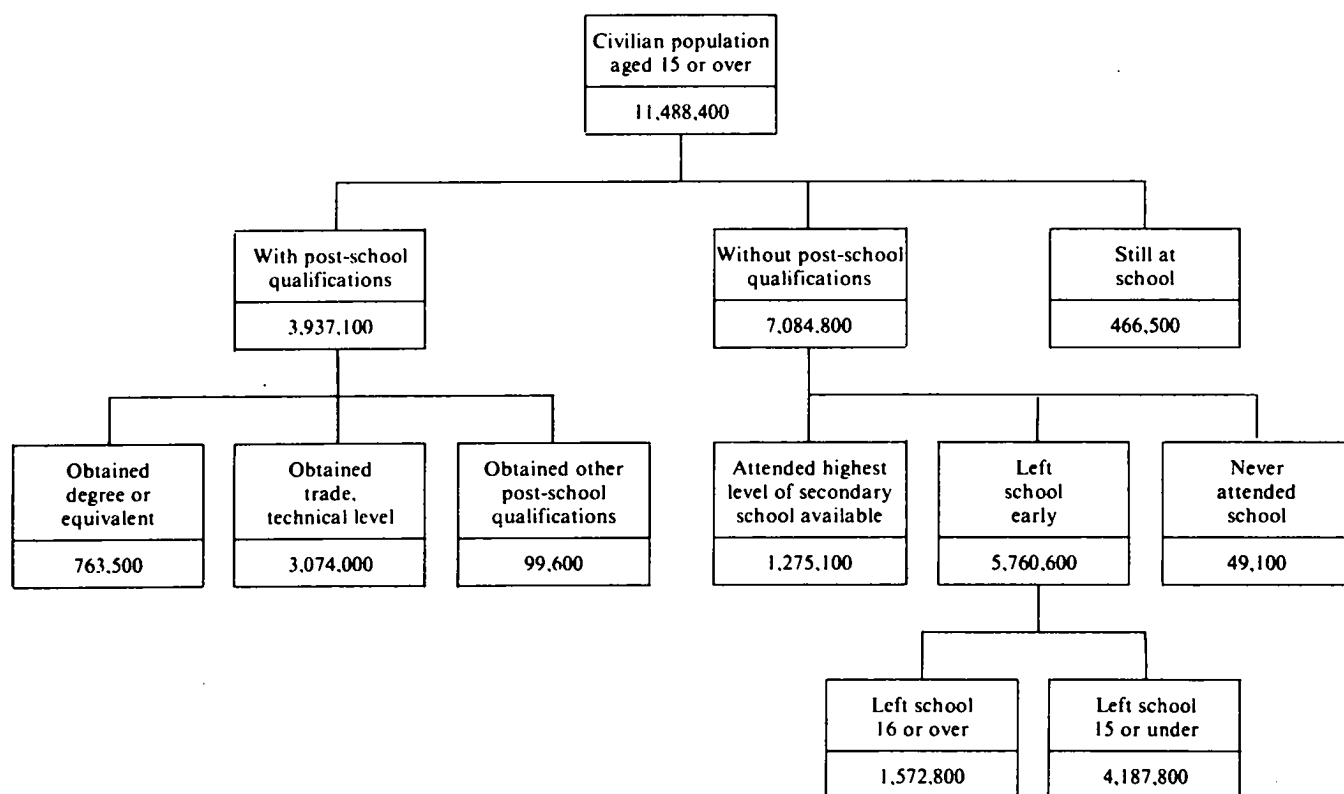
### CIVILIAN POPULATION

There were an estimated 11,488,400 persons in the civilian population (a) aged 15 years or over in February 1984. Of these, 34.3 per cent (3,937,100 persons) had obtained a post-school qualification, 61.7 per cent (7,084,800 persons) were without post-school qualifications, and 4.1 per cent (466,500 persons) were still at school.

Of the persons who had obtained post-school qualifications, 763,500 had a degree or equivalent, 3,074,000 had obtained a trade or technical qualification, and 99,600 had obtained some other post-school qualification.

Of the persons who had not obtained post-school qualifications, 1,275,100 had attended the highest level of secondary school available, and 5,760,600 had left school early (1,572,800 left school aged 16 years or over and 4,187,800 left school at age 15 years or under).

**DIAGRAM I. EDUCATIONAL ATTAINMENT OF THE CIVILIAN POPULATION(a) AGED 15 YEARS AND OVER**  
(Source : Table 1)



(a) Excludes students boarding at school, some patients in hospitals and sanatoria and inmates of reformatories, jails, etc.

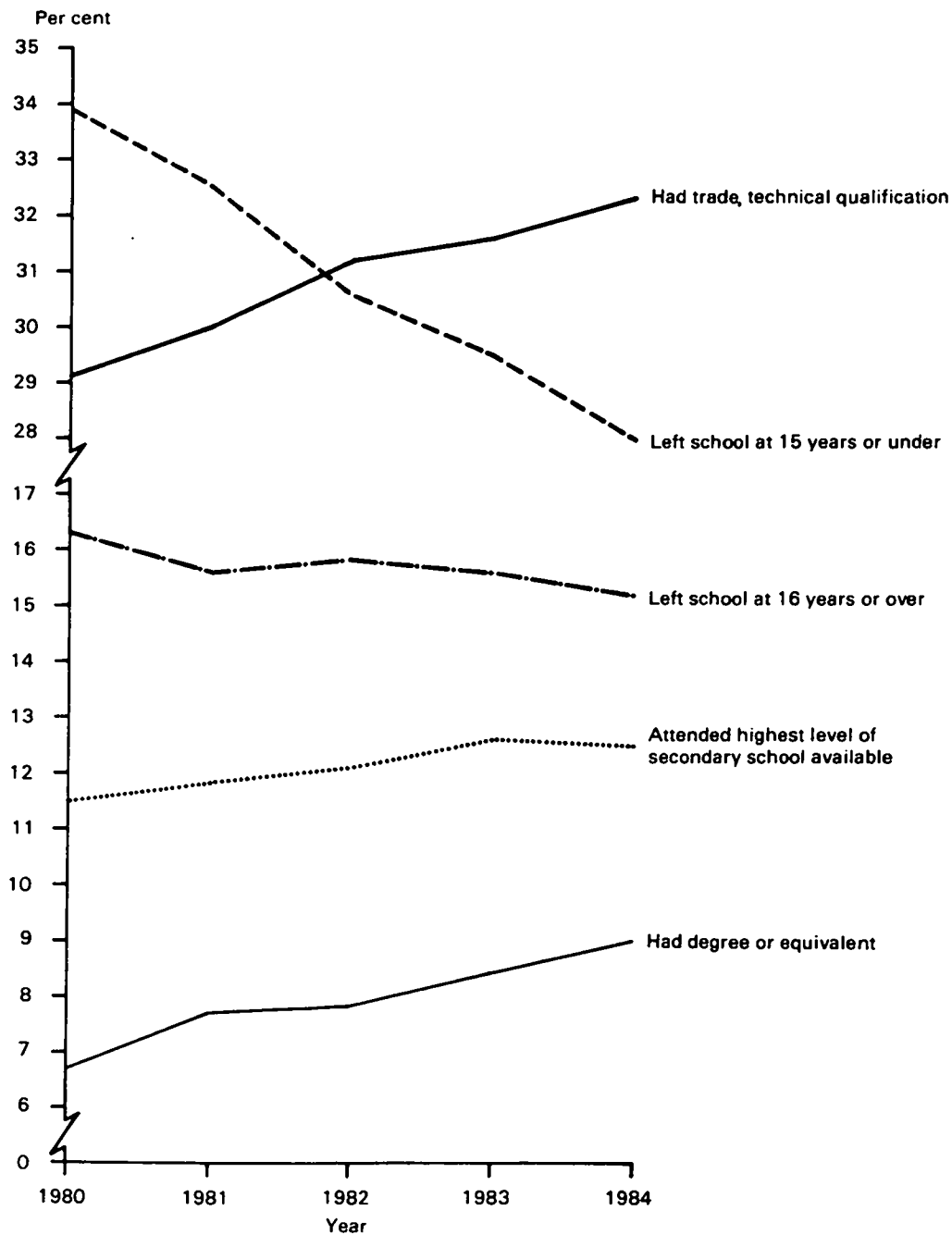
### Educational Attainment of the Labour Force

Over the period February 1980 to February 1984 significant changes occurred in the relative proportions of each of the different types of educational qualifications attained by persons in the labour force.

The proportion of persons who left school aged 15 years or under decreased from 33.9 per cent of the labour force to 28.0 per cent.

The proportion of persons with trade or technical qualifications rose from 29.1 per cent of the labour force in February 1980 to 32.3 per cent in February 1984. Similarly, the proportion of persons with a degree or equivalent qualification increased from 6.7 per cent to 9.0 per cent over the same period.

**DIAGRAM 2. EDUCATION ATTAINMENT OF THE LABOUR FORCE, FEBRUARY 1980 TO FEBRUARY 1984**  
(Source Table 1)





### Employed Persons

The numbers of employed persons with different types of educational qualifications has changed over time. The numbers of employed persons with a degree or equivalent qualification has increased by 41.8 per cent over the period February 1980 to February 1984, while the numbers of persons without post-school qualifications has decreased by 9.9 per cent over the same period (See Table 1).

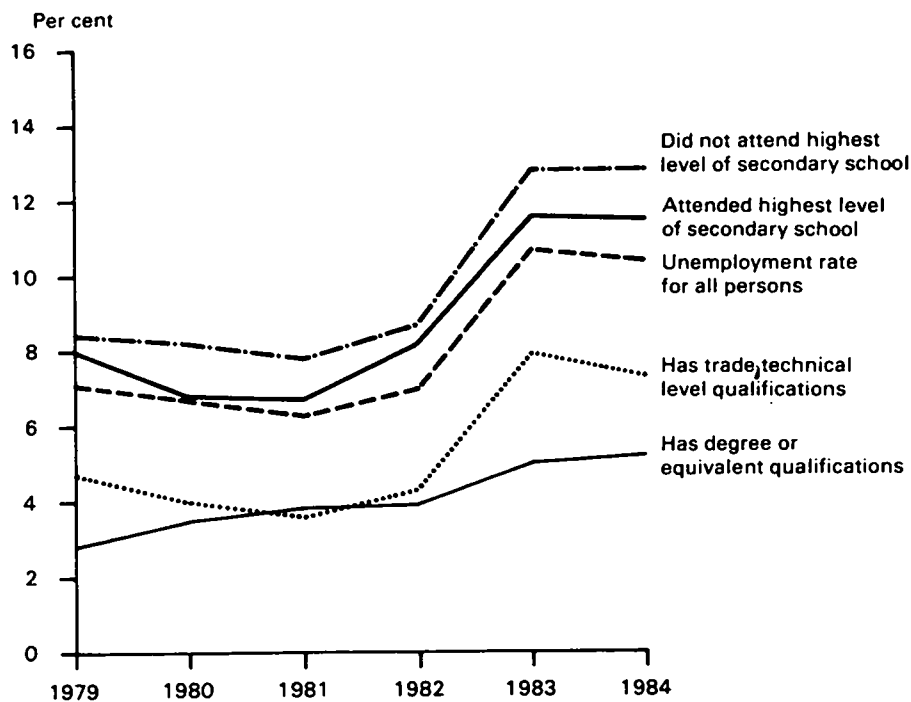
### Unemployment Rates

The unemployment rate for all persons fluctuated over the period February 1979 to February 1984. Generally the relationship of the unemployment rates for a particular category of educational qualification and the unemployment rate for all persons changed little in the period February 1979 to February 1984. The exception to this was persons with a degree or equivalent qualification where the gap between their unemployment rate and the unemployment rate of all persons has widened over the period—the unemployment rate for persons with a degree or equivalent qualification increased steadily but not as much as the unemployment rate for all persons.

In February 1984, persons with a degree or equivalent qualification had an unemployment rate of 5.2 per cent, half the unemployment rate for all persons of 10.4 per cent.

For persons who did not attend the highest level of secondary school available the unemployment rate in February 1984 was 12.8 per cent.

DIAGRAM 3. UNEMPLOYMENT RATE, FEBRUARY 1979 TO FEBRUARY 1984



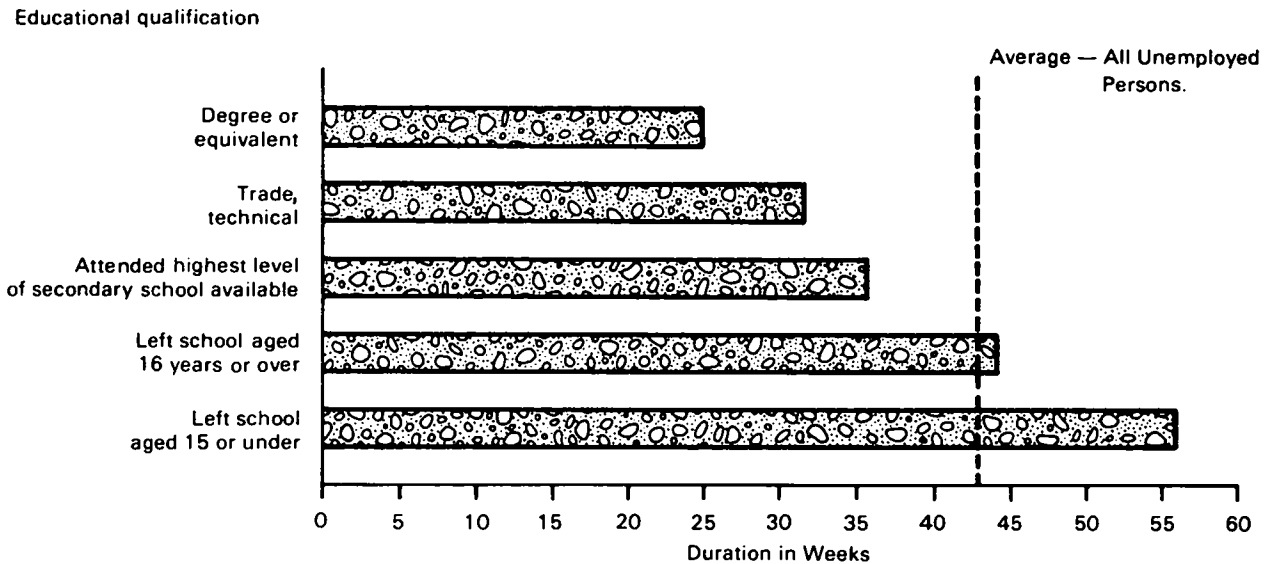
### Duration of Unemployment

The average duration of current unemployment varied according to educational qualifications. For all unemployed persons the average duration of current unemployment was 41.9 weeks.

For unemployed persons with a degree or equivalent qualification the average duration of current unemployment was 24.9 weeks, while unemployed persons with trade or technical qualifications had been out of work for an average of 31.6 weeks.

Unemployed persons who left school early had a higher average duration of unemployment. For example, unemployed persons who left school aged 15 years or under had been out of work for an average of 55.4 weeks.

**DIAGRAM 4. UNEMPLOYED PERSONS: AVERAGE DURATION OF CURRENT PERIOD OF UNEMPLOYMENT, FEBRUARY 1984**  
(Source: Table 14)



#### Persons not in the Labour Force

Of the 1,237,500 males and 3,147,100 females not in the labour force, most (60.9 per cent for males, 74.7 per cent for females) were without post-school qualifications in February 1984. (This compares with 62.8 per cent for males and 77.2 per cent for females in February 1982).

Just over half of all females (51.7 per cent) who were not in the labour force left school aged 15 years or under, compared with 46.0 per cent for males.

A greater proportion of males than females not in the labour force had post-school qualifications. 4.0 per cent of males not in the labour force (females 2.3 per cent) had a degree or equivalent qualification and 19.7 per cent (females 16.9 per cent) had a trade or technical qualification.

**DIAGRAM 5. EDUCATIONAL ATTAINMENT OF PERSONS NOT IN THE LABOUR FORCE**  
(Source: Table 15)

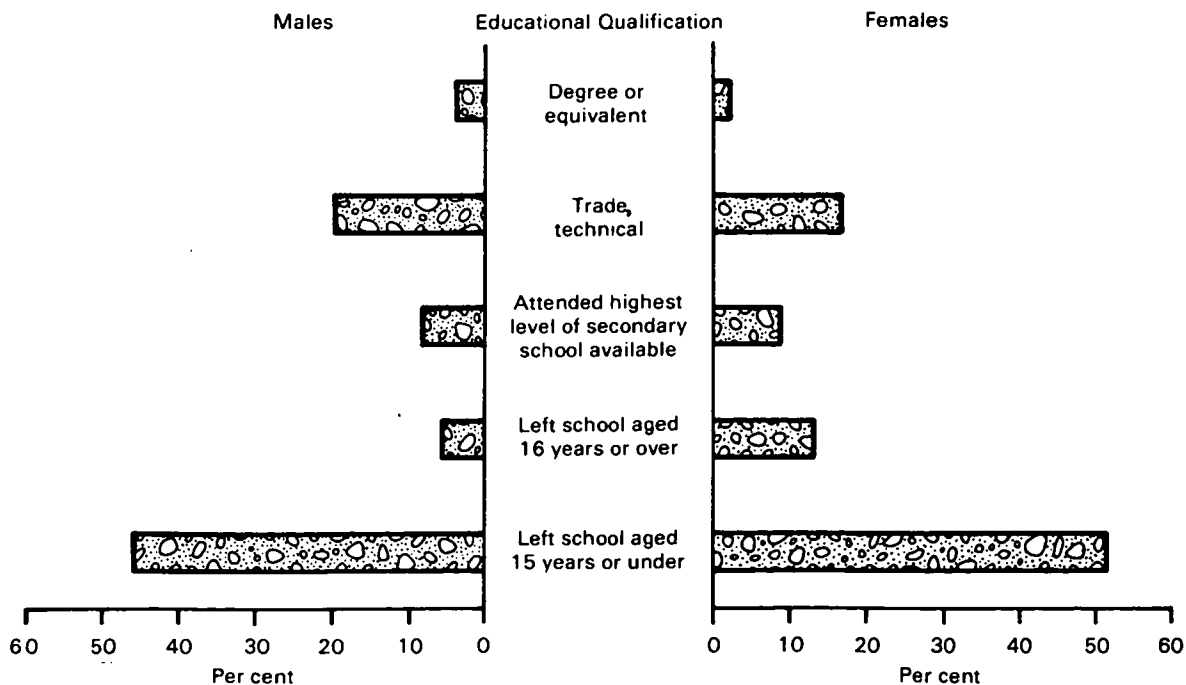


TABLE 1. SUMMARY OF SURVEY RESULTS, FEBRUARY 1980 TO FEBRUARY 1984  
( ' 000)

Labour force status and year of survey	With post-school qualifications			Attended highest secondary level	Without post-school qualifications		Total (b)	Total (c)
	Degree or equivalent	Trade, technical level	Total (a)		Did not attend highest level of secondary school and left at age (years)			
					16 or over	15 or under		
MALES								
Employed—								
1980	310.3	1,266.3	1,601.1	452.3	564.1	1,287.3	2,317.2	3,950.8
1981	353.4	1,322.0	1,703.1	474.4	555.1	1,283.7	2,321.5	4,057.1
1982	363.7	1,399.2	1,789.1	483.3	570.5	1,198.1	2,259.9	4,082.9
1983	386.9	1,368.6	1,789.6	487.0	542.4	1,108.9	2,144.1	3,959.2
1984	425.1	1,424.9	1,881.2	454.3	544.5	1,074.4	2,081.3	4,000.3
Unemployed—								
1980	10.7	38.0	50.5	22.7	53.9	93.1	169.9	229.7
1981	8.9	36.1	45.4	28.7	49.3	91.7	170.2	225.5
1982	8.4	41.6	50.6	35.2	61.9	94.6	192.3	251.7
1983	14.5	106.5	124.6	59.0	91.9	151.2	303.6	440.8
1984	18.9	96.7	118.6	60.6	89.0	149.5	301.6	435.8
Total labour force—								
1980	321.0	1,304.3	1,651.6	475.0	618.1	1,380.3	2,487.2	4,180.5
1981	362.3	1,358.1	1,748.5	503.2	604.5	1,375.5	2,491.7	4,282.5
1982	372.1	1,440.9	1,839.7	518.5	632.4	1,292.7	2,452.3	4,334.7
1983	401.4	1,475.1	1,914.2	546.1	634.2	1,260.1	2,447.7	4,440.0
1984	444.1	1,521.6	1,999.8	514.9	633.6	1,223.9	2,382.9	4,436.2
Not in the labour force(d)—								
1983	42.4	226.4	275.0	109.3	80.8	544.7	748.0	1,187.7
1984	49.0	244.3	297.4	103.7	72.2	569.8	754.2	1,237.5
Civilian population aged 15 and over(d)—								
1983	443.7	1,701.4	2,189.2	655.4	715.0	1,804.7	3,195.7	5,587.7
1984	493.1	1,765.9	2,297.2	618.6	705.7	1,793.7	3,137.1	5,673.7
FEMALES								
Employed—								
1980	119.4	586.2	727.8	258.2	414.5	789.8	1,466.0	2,228.7
1981	145.1	632.8	801.9	272.2	399.6	753.5	1,430.5	2,270.5
1982	153.9	655.5	833.0	283.7	410.0	741.9	1,440.4	2,314.6
1983	170.8	667.5	864.6	292.7	389.6	707.2	1,393.4	2,295.8
1984	184.3	704.1	918.8	333.3	387.0	674.5	1,399.2	2,365.7
Unemployed—								
1980	*	39.9	46.4	29.3	49.5	76.8	157.2	213.1
1981	10.7	36.7	51.3	24.5	48.3	62.6	136.2	196.9
1982	12.8	50.8	65.5	33.6	47.1	74.3	155.4	232.7
1983	15.0	68.9	87.4	43.3	66.7	94.8	206.0	305.9
1984	14.2	71.1	88.5	41.4	62.6	93.5	198.0	301.9
Total labour force—								
1980	124.0	626.1	774.2	287.5	464.0	866.6	1,623.2	2,441.8
1981	155.8	669.5	853.2	296.6	448.0	816.0	1,566.7	2,467.5
1982	166.7	706.3	898.5	317.2	457.1	816.3	1,595.7	2,547.3
1983	185.7	736.5	952.0	336.1	456.3	802.0	1,599.4	2,601.7
1984	198.5	775.2	1,007.2	374.7	449.5	768.0	1,597.3	2,667.6
Not in the labour force(d)—								
1983	63.5	471.9	561.7	280.8	385.0	1,658.2	2,351.9	3,073.9
1984	71.9	532.9	632.7	281.8	417.5	1,626.1	2,350.5	3,147.1
Civilian population aged 15 and over(d)—								
1983	249.2	1,208.3	1,513.7	616.9	841.3	2,460.2	3,951.3	5,675.7
1984	270.4	1,308.1	1,640.0	656.5	867.0	2,394.1	3,947.7	5,814.7
PERSONS								
Employed—								
1980	429.7	1,852.5	2,329.0	710.5	978.5	2,077.1	3,783.3	6,179.5
1981	498.5	1,954.8	2,505.0	746.6	954.9	2,037.1	3,752.0	6,327.6
1982	517.6	2,054.8	2,622.1	766.9	980.5	1,940.0	3,700.3	6,397.5
1983	557.6	2,036.1	2,654.2	779.8	932.0	1,816.1	3,537.4	6,255.0
1984	609.5	2,129.0	2,799.9	787.6	931.5	1,748.9	3,480.5	6,366.0
Unemployed—								
1980	15.4	77.9	96.9	52.0	103.4	169.8	327.1	442.8
1981	19.6	72.8	96.7	53.2	97.6	154.3	306.4	422.4
1982	21.2	92.4	116.1	68.7	108.9	168.9	347.7	484.4
1983	29.5	175.4	212.0	102.4	158.5	246.0	509.7	746.7
1984	33.1	167.8	207.1	102.0	151.6	243.0	499.6	737.8
Total labour force—								
1980	445.1	1,930.4	2,425.8	762.5	1,081.9	2,246.9	4,110.4	6,622.3
1981	518.1	2,027.6	2,601.7	799.8	1,052.4	2,191.5	4,058.4	6,750.0
1982	538.8	2,147.2	2,738.2	835.7	1,089.4	2,108.9	4,048.0	6,881.9
1983	587.1	2,211.5	2,866.3	882.2	1,090.5	2,062.1	4,047.1	7,001.7
1984	642.6	2,296.8	3,007.0	889.6	1,083.1	1,991.9	3,980.2	7,103.8
Not in the labour force(d)—								
1983	105.8	698.2	836.7	390.1	465.8	2,202.8	3,099.9	4,261.6
1984	120.9	777.2	930.1	385.5	489.7	2,195.9	3,104.7	4,384.7
Civilian population aged 15 and over(d)—								
1983	693.0	2,909.8	3,702.9	1,272.3	1,556.3	4,265.0	7,147.0	11,263.4
1984	763.5	3,074.0	3,937.1	1,275.1	1,572.8	4,187.8	7,084.8	11,488.4

(a) Includes persons with other post-school qualifications. (b) Includes persons who never attended school. (c) Includes persons aged 15 to 20 years still at school. (d) In 1980 and 1981 only persons in the labour force were surveyed. See Explanatory notes, paragraph 13.

**TABLE 2. SUMMARY OF SURVEY RESULTS : UNEMPLOYED PERSONS : EDUCATIONAL ATTAINMENT, UNEMPLOYMENT RATES, AVERAGE AND MEDIAN DURATIONS OF UNEMPLOYMENT, FEBRUARY 1980 TO FEBRUARY 1984**

	<i>With post-school qualifications</i>			<i>Without post-school qualifications</i>			
	<i>Degree or equivalent</i>	<i>Trade, technical level</i>	<i>Total (a)</i>	<i>Attended highest secondary level</i>	<i>Did not attend highest level of secondary school</i>	<i>Total (b)</i>	<i>Total (c)</i>
<b>MALES</b>							
Unemployment rate (per cent)—							
1980	3.3	2.9	3.1	4.8	7.4	6.8	5.5
1981	2.7	2.5	2.6	5.7	7.1	6.8	5.3
1982	2.3	2.9	2.7	6.8	8.1	7.8	5.8
1983	3.6	7.2	6.5	10.8	12.8	12.4	10.0
1984	4.3	6.4	5.9	11.8	12.8	12.7	9.8
Average duration (weeks)—							
1980	18.6	24.6	24.0	15.7	32.9	30.6	28.4
1981	19.4	25.2	23.9	26.2	41.1	38.6	34.5
1982	20.6	31.0	29.0	22.3	37.5	34.9	32.9
1983	20.2	23.3	23.4	24.8	37.7	35.2	31.2
1984	34.7	35.3	35.3	37.5	54.4	51.2	45.6
Median duration (weeks)—							
1980	9.8	8.8	9.6	10.8	15.7	14.1	12.3
1981	9.1	9.5	9.3	11.5	19.4	16.9	12.8
1982	8.1	11.8	11.0	10.0	14.4	13.1	12.2
1983	11.0	12.0	12.0	12.0	19.0	17.1	14.1
1984	12.1	21.1	19.1	15.0	39.1	32.1	26.1
<b>FEMALES</b>							
Unemployment rate (per cent)—							
1980	*	6.4	6.0	10.2	9.5	9.7	8.7
1981	6.9	5.5	6.0	8.2	8.8	8.7	8.0
1982	7.7	7.2	7.3	10.6	9.5	9.7	9.1
1983	8.0	9.4	9.2	12.9	12.9	12.9	11.8
1984	7.1	9.2	8.8	11.0	12.8	12.4	11.3
Average duration (weeks)—							
1980	*	20.6	21.4	20.6	29.7	28.6	26.5
1981	16.4	22.9	20.8	21.3	31.8	30.0	26.8
1982	12.8	20.4	19.4	20.1	31.8	29.2	25.6
1983	23.6	22.4	23.3	24.1	36.5	33.8	30.6
1984	11.7	26.6	25.0	32.9	45.9	43.3	36.4
Median duration (weeks)—							
1980	*	9.1	9.4	10.0	11.1	11.0	10.6
1981	10.1	10.3	9.8	10.5	11.4	11.2	10.6
1982	8.6	8.4	8.6	8.7	11.1	10.4	9.6
1983	9.0	9.0	9.0	10.0	14.1	13.0	12.0
1984	8.0	9.0	9.1	12.0	18.1	16.1	13.0
<b>PERSONS</b>							
Unemployment rate (per cent)—							
1980	3.5	4.0	4.0	6.8	8.2	8.0	6.7
1981	3.8	3.6	3.7	6.7	7.8	7.5	6.3
1982	3.9	4.3	4.2	8.2	8.7	8.6	7.0
1983	5.0	7.9	7.4	11.6	12.8	12.6	10.7
1984	5.2	7.3	6.9	11.5	12.8	12.6	10.4
Average duration (weeks)—							
1980	20.1	22.5	22.7	18.5	31.4	29.6	27.5
1981	17.8	24.0	22.2	24.0	37.0	34.8	30.9
1982	15.9	25.2	23.6	21.2	35.0	32.4	29.4
1983	22.0	23.0	23.4	24.5	37.2	34.6	30.9
1984	24.9	31.6	30.9	35.6	51.1	48.1	41.9
Median duration (weeks)—							
1980	9.6	9.0	9.5	10.5	12.6	12.3	11.5
1981	9.7	9.9	9.6	11.1	15.1	13.0	11.8
1982	8.5	9.9	9.6	9.2	12.5	11.8	10.9
1983	9.1	10.1	11.0	11.1	17.1	16.0	13.0
1984	10.1	15.0	13.1	13.0	28.1	26.0	19.1

(a) Includes person with other post-school qualifications. (b) Includes persons who never attended school. (c) Includes persons aged 15 to 20 years still at school.

TABLE 3. CIVILIAN POPULATION AGED 15 AND OVER(a): EDUCATIONAL ATTAINMENT AND LABOUR FORCE STATUS, FEBRUARY 1984

Educational attainment	Number ('000)							Participation rate —per cent—	Unemployment rate
	Employed			Unemployed	In the labour force	Not in the labour force	Total		
	Full-time	Part-time	Total						
<b>MALES</b>									
With post-school qualifications	1,800.8	80.4	1,881.2	118.6	1,999.8	297.4	2,297.2	87.1	5.9
Degree or equivalent	399.6	25.5	425.1	18.9	441.1	49.0	493.1	90.1	4.3
Trade, technical level	1,370.3	54.6	1,424.9	96.7	1,521.6	244.3	1,765.9	86.2	6.4
Other	30.9	*	31.2	*	34.1	*	38.2	89.3	*
Without post-school qualifications	1,960.9	120.4	2,081.3	301.6	2,382.9	754.2	3,137.1	76.0	12.7
Attended highest level of secondary school available	418.5	35.8	454.3	60.6	514.9	103.7	618.6	83.2	11.8
Did not attend highest level of secondary school available	1,534.6	84.4	1,618.9	238.6	1,857.5	642.0	2,499.5	74.3	12.8
Left at age—									
18 years or over	22.2	*	22.9	4.6	27.6	*	30.9	89.1	16.8
16 or 17 years	493.7	27.9	521.6	84.4	606.0	68.8	674.8	89.8	13.9
14 or 15 years	873.2	44.2	917.5	128.4	1,045.9	408.0	1,453.9	71.9	12.3
13 years or under	145.5	11.4	156.9	21.1	178.0	161.8	339.8	52.4	11.9
Never attended school	7.9	*	8.1	*	10.5	8.5	19.0	55.3	*
Still at school	*	36.0	37.8	15.7	53.5	186.0	239.5	22.3	29.3
<b>Total</b>	<b>3,763.6</b>	<b>236.8</b>	<b>4,000.3</b>	<b>435.8</b>	<b>4,436.2</b>	<b>1,237.5</b>	<b>5,673.7</b>	<b>78.2</b>	<b>9.8</b>
<b>FEMALES</b>									
With post-school qualifications	625.3	293.5	918.8	88.5	1,007.2	632.7	1,640.0	61.4	8.8
Degree or equivalent	138.9	45.5	184.3	14.2	198.5	71.9	270.4	73.4	7.1
Trade, technical level	465.7	238.4	704.1	71.1	775.2	532.9	1,308.1	59.3	9.2
Other	20.6	9.7	30.3	*	33.5	27.9	61.4	54.6	*
Without post-school qualifications	887.0	512.2	1,399.2	198.0	1,597.3	2,350.5	3,947.7	40.5	12.4
Attended highest level of secondary school available	225.0	108.3	333.3	41.4	374.7	281.8	656.5	57.1	11.0
Did not attend highest level of secondary school available	658.6	402.9	1,061.5	156.1	1,217.6	2,043.6	3,261.1	37.3	12.8
Left at age—									
18 years or over	11.1	*	14.7	*	16.4	12.8	29.2	56.2	*
16 or 17 years	259.4	112.9	372.2	60.9	433.1	404.7	837.9	51.7	14.1
14 or 15 years	340.3	256.3	596.6	82.8	679.4	1,322.8	2,002.2	33.9	12.2
13 years or under	47.8	30.2	77.9	10.7	88.7	303.2	391.9	22.6	12.1
Never attended school	*	*	*	*	5.0	25.1	30.1	16.6	*
Still at school	*	46.9	47.7	15.4	63.1	164.0	227.0	27.8	24.4
<b>Total</b>	<b>1,513.1</b>	<b>852.6</b>	<b>2,365.7</b>	<b>301.9</b>	<b>2,667.6</b>	<b>3,147.1</b>	<b>5,814.7</b>	<b>45.9</b>	<b>11.3</b>
<b>PERSONS</b>									
With post-school qualifications	2,426.1	373.8	2,799.9	207.1	3,007.0	930.1	3,937.1	76.4	6.9
Degree or equivalent	538.5	70.9	609.5	33.1	642.6	120.9	763.5	84.2	5.2
Trade, technical level	1,836.0	293.0	2,129.0	167.8	2,296.8	777.2	3,074.0	74.7	7.3
Other	51.5	9.9	61.5	6.2	67.6	32.0	99.6	67.9	9.1
Without post-school qualifications	2,847.9	632.6	3,480.5	499.6	3,980.2	3,104.7	7,084.8	56.2	12.6
Attended highest level of secondary school available	643.5	144.1	787.6	102.0	889.6	385.5	1,275.1	69.8	11.5
Did not attend highest level of secondary school available	2,193.1	487.3	2,680.4	394.7	3,075.0	2,685.6	5,760.6	53.4	12.8
Left at age—									
18 years or over	33.3	*	37.7	6.3	44.0	16.1	60.1	73.2	14.3
16 or 17 years	753.0	140.8	893.8	145.3	1,039.2	473.5	1,512.7	68.7	14.0
14 or 15 years	1,213.5	300.5	1,514.0	211.2	1,725.3	1,730.8	3,456.1	49.9	12.2
13 years or under	193.3	41.6	234.9	31.8	266.7	465.1	731.7	36.4	11.9
Never attended school	11.3	*	12.5	*	15.5	33.6	49.1	31.6	*
Still at school	*	82.9	85.5	31.1	116.6	349.9	466.5	25.0	26.6
<b>Total</b>	<b>5,276.6</b>	<b>1,089.4</b>	<b>6,366.0</b>	<b>737.8</b>	<b>7,103.8</b>	<b>4,384.7</b>	<b>11,488.4</b>	<b>61.8</b>	<b>10.4</b>

(a) Excludes students boarding at school, some patients in hospitals and sanatoria and inmates of reformatories, jails, etc.

TABLE 4. CIVILIAN POPULATION AGED 15 AND OVER(a): EDUCATIONAL ATTAINMENT AND AGE, FEBRUARY 1984

Educational attainment	Age group (years)						Total	per cent
	15-19	20-24	25-34	35-44	45-54	55 and over		
	— '000—							
MALES								
With post-school qualifications	30.4	240.4	658.9	544.7	376.9	445.8	2,297.2	40.5
Degree or equivalent	*	41.0	177.5	132.8	62.8	78.9	493.1	8.7
Trade, technical level	25.7	195.2	474.0	402.2	307.3	361.6	1,765.9	31.1
Other	4.8	*	7.4	9.7	6.8	5.2	38.2	0.7
Without post-school qualifications	368.4	416.0	587.9	471.5	423.3	867.0	3,137.1	55.3
Attended highest level of secondary school available	102.6	147.9	165.9	80.8	43.9	77.6	618.6	10.9
Did not attend highest level of secondary school available	265.5	268.0	419.7	388.0	374.8	783.4	2,499.5	44.1
Left at age—								
18 years or over	*	6.5	8.0	8.3	*	*	30.9	0.5
16 or 17 years	142.2	148.2	166.1	95.3	53.0	69.9	674.8	11.9
14 or 15 years	120.3	110.6	226.7	238.3	247.4	510.7	1,453.9	25.6
13 years or under	*	*	18.8	46.1	70.9	199.9	339.8	6.0
Never attended school	*	*	*	*	4.6	9.0	19.0	0.3
Still at school(b)	238.8	*	..	..	..	..	239.5	4.2
<b>Total</b>	<b>637.6</b>	<b>657.1</b>	<b>1,246.8</b>	<b>1,016.2</b>	<b>800.2</b>	<b>1,315.8</b>	<b>5,673.7</b>	<b>100.0</b>
FEMALES								
With post-school qualifications	65.1	227.4	527.7	378.3	197.4	244.1	1,640.0	28.2
Degree or equivalent	*	36.0	119.0	65.4	21.9	27.8	270.4	4.7
Trade, technical level	59.6	183.6	392.2	300.9	165.0	206.8	1,308.1	22.5
Other	5.2	7.8	16.5	12.0	10.5	9.4	61.4	1.1
Without post-school qualifications	330.0	435.1	720.6	665.5	556.5	1,240.0	3,947.7	67.9
Attended highest level of secondary school available	114.3	138.0	135.5	85.7	59.7	123.4	656.5	11.3
Did not attend highest level of secondary school available	215.3	295.7	582.3	576.1	492.1	1,099.6	3,261.1	56.1
Left at age—								
18 years or over	*	7.3	8.7	5.0	*	*	29.2	0.5
16 or 17 years	116.2	160.5	235.0	134.1	75.0	117.1	837.9	14.4
14 or 15 years	95.1	123.4	310.5	378.2	335.2	759.8	2,002.2	34.4
13 years or under	*	*	28.1	58.9	79.7	219.5	391.9	6.7
Never attended school	*	*	*	*	4.8	17.0	30.1	0.5
Still at school(b)	226.6	*	..	..	..	..	227.0	3.9
<b>Total</b>	<b>621.7</b>	<b>663.0</b>	<b>1,248.3</b>	<b>1,043.8</b>	<b>753.9</b>	<b>1,484.1</b>	<b>5,814.7</b>	<b>100.0</b>
PERSONS								
With post-school qualifications	95.5	467.9	1,186.6	923.0	574.3	689.8	3,937.1	34.3
Degree or equivalent	*	77.1	296.5	198.2	84.7	106.7	763.5	6.6
Trade, technical level	85.3	378.8	866.1	703.1	472.2	568.5	3,074.0	26.8
Other	10.0	12.0	23.9	21.7	17.4	14.6	99.6	0.9
Without post-school qualifications	698.4	851.1	1,308.5	1,137.0	979.8	2,110.0	7,084.8	61.7
Attended highest level of secondary school available	216.8	285.9	301.4	166.5	103.5	201.0	1,275.1	11.1
Did not attend highest level of secondary school available	480.9	563.7	1,002.0	964.2	866.9	1,883.0	5,760.6	50.1
Left at age—								
18 years or over	*	13.9	16.7	13.4	5.6	6.2	60.1	0.5
16 or 17 years	258.4	308.7	401.1	229.4	128.0	187.0	1,512.7	13.2
14 or 15 years	215.4	234.0	537.2	616.4	582.6	1,270.5	3,456.1	30.1
13 years or under	*	7.1	47.0	105.0	150.6	419.3	731.7	6.4
Never attended school	*	*	5.1	6.3	9.4	26.0	49.1	0.4
Still at school(b)	465.4	*	..	..	..	..	466.5	4.1
<b>Total</b>	<b>1,259.3</b>	<b>1,320.1</b>	<b>2,495.0</b>	<b>2,060.0</b>	<b>1,554.1</b>	<b>2,799.9</b>	<b>11,488.4</b>	<b>100.0</b>

(a) Excludes students boarding at school, some patients in hospitals and sanatoria and inmates of reformatories, jails, etc. (b) Aged 15 to 20 years only. See explanatory notes, paragraph 10.

**TABLE 5. CIVILIAN POPULATION AGED 15 AND OVER(a) : EDUCATIONAL ATTAINMENT AND FAMILY STATUS, FEBRUARY 1984 (' 000)**

	<i>With post-school qualifications</i>			<i>Without post-school qualifications</i>				
	<i>Degree or equivalent</i>	<i>Trade, technical level</i>	<i>Total (b)</i>	<i>Attended highest secondary level</i>	<i>Did not attend highest level of secondary school and left at age (years)</i>		<i>Total (c)</i>	<i>Total (d)</i>
					<i>16 or over</i>	<i>15 or under</i>		
<b>MALES</b>								
Member of family	390.1	1,500.8	1,924.8	501.5	577.0	1,518.3	2,612.5	4,767.0
Spouse	342.2	1,292.3	1,660.3	267.6	307.7	1,222.2	1,809.3	3,469.6
With children 0-14 present	200.2	690.9	904.1	138.7	179.4	485.2	807.0	1,711.1
Without children 0-14 present	142.1	601.4	756.2	128.8	128.3	737.0	1,002.2	1,758.5
Not married family head	7.2	24.0	31.8	7.9	14.0	44.2	67.2	99.0
With children 0-14 present	*	9.3	11.9	*	5.3	11.6	19.4	31.3
Without children 0-14 present	4.8	14.7	19.9	5.7	8.7	32.6	47.8	67.7
Child of family head	37.6	168.0	212.5	213.3	243.4	206.3	664.7	1,101.8
Other relative	*	16.6	20.2	12.8	12.0	45.6	71.3	96.7
Not a member of a family	85.3	219.3	308.3	91.0	98.5	210.3	402.8	711.9
Not living alone	39.1	102.4	143.3	53.0	55.9	75.7	186.3	330.4
Living alone	46.3	117.0	164.9	38.1	42.6	134.7	216.5	381.5
Not family coded	17.6	45.7	64.0	26.1	30.2	65.1	121.8	194.9
<b>Total</b>	<b>493.1</b>	<b>1,765.9</b>	<b>2,297.2</b>	<b>618.6</b>	<b>705.7</b>	<b>1,793.7</b>	<b>3,137.1</b>	<b>5,673.7</b>
<b>FEMALES</b>								
Member of family	206.0	1,079.4	1,339.1	525.0	730.4	1,975.1	3,255.3	4,813.6
Spouse	160.4	851.4	1,050.3	315.3	497.8	1,555.5	2,383.4	3,433.7
With children 0-14 present	92.8	493.5	607.0	152.7	296.6	626.1	1,079.5	1,686.5
Without children 0-14 present	67.6	357.9	443.3	162.6	201.2	929.4	1,303.9	1,747.2
Not married family head	17.7	86.6	110.0	36.7	71.5	233.0	343.8	454.0
With children 0-14 present	9.6	55.2	68.2	19.8	52.4	111.9	184.6	253.1
Without children 0-14 present	8.1	31.3	41.7	16.9	19.1	121.1	159.2	200.9
Child of family head	24.3	127.0	159.7	160.1	148.5	116.6	427.4	803.0
Other relative	*	14.3	19.2	12.9	12.6	70.0	100.8	122.8
Not a member of a family	53.1	177.4	235.6	100.4	108.6	348.3	561.0	797.9
Not living alone	26.9	79.9	108.7	41.9	49.9	57.4	150.7	260.6
Living alone	26.2	97.5	126.9	58.5	58.7	290.8	410.3	537.3
Not family coded	11.3	51.3	65.3	31.1	28.0	70.7	131.4	203.3
<b>Total</b>	<b>270.4</b>	<b>1,308.1</b>	<b>1,640.0</b>	<b>656.5</b>	<b>867.0</b>	<b>2,394.1</b>	<b>3,947.7</b>	<b>5,814.7</b>
<b>PERSONS</b>								
Member of family	596.1	2,580.2	3,264.0	1,026.5	1,307.4	3,493.4	5,867.8	9,580.5
Spouse	502.6	2,143.7	2,710.6	582.9	805.5	2,777.6	4,192.7	6,903.3
With children 0-14 present	293.0	1,184.4	1,511.1	291.5	476.0	1,111.3	1,886.6	3,397.6
Without children 0-14 present	209.7	959.3	1,199.6	291.4	329.4	1,666.4	2,306.1	3,505.7
Not married family head	24.9	110.5	141.7	44.6	85.5	277.1	410.9	553.0
With children 0-14 present	12.1	64.5	80.1	22.1	57.7	123.4	204.0	284.4
Without children 0-14 present	12.9	46.0	61.6	22.5	27.8	153.7	207.0	268.6
Child of family head	61.9	295.0	372.2	373.4	391.8	323.0	1,092.1	1,904.8
Other relative	6.6	30.9	39.4	25.6	24.6	115.6	172.1	219.5
Not a member of a family	138.4	396.7	543.9	191.4	207.1	558.6	963.9	1,509.8
Not living alone	66.0	182.3	252.0	94.9	105.8	133.1	337.0	591.0
Living alone	72.4	214.5	291.8	96.5	101.4	425.5	626.8	918.8
Not family coded	28.9	97.1	129.3	57.2	58.2	135.9	253.2	398.1
<b>Total</b>	<b>763.5</b>	<b>3,074.0</b>	<b>3,937.1</b>	<b>1,275.1</b>	<b>1,572.8</b>	<b>4,187.8</b>	<b>7,084.8</b>	<b>11,488.4</b>

(a) Excludes students boarding at school, some patients in hospitals and sanatoria and inmates of reformatories, jails, etc. (b) Includes persons with other post-school qualifications. (c) Includes persons who never attended school. (d) Includes persons aged 15 to 20 years still at school.

**TABLE 6. CIVILIAN POPULATION AGED 15 AND OVER WITH A DEGREE OR EQUIVALENT QUALIFICATION(a): MAIN FIELD OF STUDY, AGE AND LABOUR FORCE STATUS, FEBRUARY 1984**

Main field of study	Age group (years)				In the labour force		Not in the labour force	Total	Participation rate
	15-24	25-44	45-54	55 and over	Employed	Total			
— '000—									
<b>MALES</b>									
Administration etc.(b)	8.1	58.5	9.6	15.8	80.6	82.7	9.4	92.1	89.8
Law	*	18.5	*	6.9	26.1	26.9	*	30.2	89.0
Education, teaching	*	39.8	7.8	6.9	53.3	54.6	*	58.8	93.0
Medicine(c)	*	28.1	8.9	11.7	44.8	46.0	4.6	50.6	90.9
Science(d)	14.6	62.5	10.8	9.3	85.9	89.5	7.8	97.3	92.0
Engineering(e)	*	43.6	10.6	12.9	59.6	63.2	8.3	71.5	88.4
Architecture	*	10.6	*	*	14.1	15.3	*	17.4	87.6
Humanities(f)	4.5	44.0	7.8	10.9	54.7	59.5	7.8	67.3	88.4
Other	*	4.9	*	*	5.9	6.4	*	7.9	80.8
<b>Total</b>	<b>41.0</b>	<b>310.4</b>	<b>62.8</b>	<b>78.9</b>	<b>425.1</b>	<b>444.1</b>	<b>49.0</b>	<b>493.1</b>	<b>90.1</b>
<b>FEMALES</b>									
Administration etc.(b)	4.8	14.0	*	*	16.8	18.0	*	22.3	80.8
Law	*	5.0	*	*	5.7	6.0	*	7.8	76.1
Education, teaching	7.9	55.3	7.5	6.1	52.1	56.7	20.2	76.9	73.7
Medicine(c)	6.0	19.1	7.4		24.0	24.7	7.8	32.5	76.1
Science(d)	7.3	24.7	*	*	23.4	25.3	10.9	36.2	69.8
Engineering(e)	*	*	*	*	*	*	*	*	*
Architecture	*	*	*	*	*	*	*	*	*
Humanities(f)	7.9	61.6	6.2	11.9	57.0	62.1	25.5	87.6	70.9
Other	*	*	*	*	*	*	*	*	*
<b>Total</b>	<b>36.3</b>	<b>184.4</b>	<b>21.9</b>	<b>27.8</b>	<b>184.3</b>	<b>198.5</b>	<b>71.9</b>	<b>270.4</b>	<b>73.4</b>
<b>PERSONS</b>									
Administration etc.(b)	12.9	72.5	12.1	16.9	97.4	100.7	13.7	114.4	88.0
Law	*	23.4	*	8.3	31.8	32.8	5.2	38.0	86.4
Education, teaching	12.2	95.1	15.3	13.0	105.5	111.3	24.3	135.6	82.0
Medicine(c)	7.9	47.1	12.7	15.4	68.9	70.7	12.4	83.1	85.1
Science(d)	21.9	87.2	12.3	12.1	109.3	114.8	18.7	133.5	86.0
Engineering(e)	5.0	45.1	10.6	13.1	61.1	65.0	8.9	73.9	88.0
Architecture	*	12.1	6.4		16.0	17.1	*	19.3	88.8
Humanities(f)	12.4	105.6	14.1	22.9	111.8	121.7	33.3	154.9	78.5
Other	*	6.6	*	*	7.9	8.5	*	10.7	78.9
<b>Total</b>	<b>77.3</b>	<b>494.7</b>	<b>84.7</b>	<b>106.7</b>	<b>609.5</b>	<b>642.6</b>	<b>120.9</b>	<b>763.5</b>	<b>84.2</b>

(a) Excludes students boarding at school, some patients in hospitals and sanatoria and inmates of reformatories, jails, etc. (b) Includes administration, business studies, commerce, economics, accounting, secretarial studies, etc. (c) Includes dentistry, pharmacy, nursing. (d) Includes mathematics, computing, veterinary and agricultural science, statistics, computer programming, chemistry, physics, etc. (e) Includes telecommunication, transport, surveying. (f) Includes languages, history, politics, philosophy, psychology, social welfare, religion, geography, art, music, etc.



**TABLE 7. CIVILIAN POPULATION AGED 15 AND OVER WITH A TRADE OR TECHNICAL QUALIFICATION(a) : MAIN FIELD OF STUDY, AGE AND LABOUR FORCE STATUS, FEBRUARY 1984 ('000)**

Main field of study	Age group (years)				In the labour force			Not in the labour force	Total
	15-24	25-44	45-54	55 and over	Employed	Unemployed	Total		
<b>MALES</b>									
Trades—									
Metal	43.9	132.4	50.3	55.8	220.5	24.1	244.6	37.7	282.4
Electrical	25.3	74.7	27.6	29.5	130.4	7.4	137.8	19.2	157.1
Building	32.5	130.0	48.6	59.8	212.7	16.9	229.6	41.3	270.9
Automotive	34.3	98.6	26.1	27.2	157.4	8.6	166.1	20.1	186.1
Other	33.3	129.5	45.0	56.2	211.3	13.9	225.1	38.9	264.0
Total	169.3	565.2	197.6	228.4	932.3	71.0	1,003.3	157.2	1,160.5
Secretarial, etc.(b)	*	*	*	*	7.0	*	7.4	*	10.4
Health, para-medical(c)	*	21.7	5.9	7.2	31.7	*	33.2	5.8	39.1
Engineering(d)	8.0	83.6	30.6	42.7	133.6	5.0	138.6	26.2	164.9
Teaching	*	28.3	7.7	13.2	42.6	*	43.3	8.8	52.1
Administration, law(e)	8.3	80.1	35.6	37.1	131.0	6.7	137.7	23.4	161.1
Science, humanities(f)	11.9	34.7	7.4	10.9	53.1	*	57.4	7.5	64.9
Other	14.0	58.9	20.6	19.5	93.6	7.1	100.7	12.3	113.0
<b>Total</b>	<b>220.8</b>	<b>876.2</b>	<b>307.3</b>	<b>361.6</b>	<b>1,424.9</b>	<b>96.7</b>	<b>1,521.6</b>	<b>244.3</b>	<b>1,765.9</b>
<b>FEMALES</b>									
Trades	17.2	55.2	15.4	16.6	50.1	5.0	55.0	49.4	104.5
Secretarial, etc.(b)	129.4	251.8	48.5	67.5	266.2	34.3	300.5	196.7	497.2
Health, para-medical(c)	43.7	186.3	51.0	60.9	190.5	12.5	203.0	138.8	341.8
Engineering(d)	*	*	*	*	*	*	4.9	*	8.1
Teaching	14.9	103.2	20.3	25.6	89.7	5.8	95.5	68.4	163.9
Administration, law(e)	7.6	26.0	6.4	8.4	29.0	*	32.9	15.5	48.4
Science, humanities(f)	12.2	33.9	12.6	15.2	40.1	*	43.2	30.7	73.9
Other	16.2	32.4	10.1	11.7	34.1	6.0	40.1	30.3	70.4
<b>Total</b>	<b>243.3</b>	<b>693.1</b>	<b>165.0</b>	<b>206.8</b>	<b>704.1</b>	<b>71.1</b>	<b>775.2</b>	<b>532.9</b>	<b>1,308.1</b>
<b>PERSONS</b>									
Trades—									
Metal	44.5	133.2	50.3	56.0	221.8	24.1	245.9	38.0	283.9
Electrical	25.3	74.8	27.6	30.0	130.5	7.8	138.3	19.5	157.8
Building	32.7	130.5	48.6	60.3	213.0	17.3	230.3	41.7	272.0
Automotive	34.3	99.2	26.1	27.2	158.0	8.6	166.7	20.1	186.7
Other	49.8	182.7	60.4	71.6	259.1	18.1	277.1	87.4	364.5
Total	186.6	620.4	213.0	245.0	982.4	75.9	1,058.3	206.7	1,265.0
Secretarial, etc.(b)	131.7	255.4	50.3	70.1	273.1	34.8	307.9	199.6	507.6
Health, para-medical(c)	47.9	208.0	56.9	68.1	222.2	14.1	236.3	144.6	380.9
Engineering(d)	10.0	87.9	31.4	43.7	138.0	5.6	143.6	29.3	172.9
Teaching	17.8	131.5	27.9	38.8	132.3	6.5	138.8	77.3	216.0
Administration, law(e)	15.9	106.2	41.9	45.5	160.0	10.5	170.6	38.9	209.5
Science, humanities(f)	24.0	68.6	20.0	26.1	93.2	7.4	100.6	38.2	138.8
Other	30.2	91.3	30.7	31.2	127.7	13.1	140.8	42.6	183.4
<b>Total</b>	<b>464.1</b>	<b>1,569.3</b>	<b>472.2</b>	<b>568.5</b>	<b>2,129.0</b>	<b>167.8</b>	<b>2,296.8</b>	<b>777.2</b>	<b>3,074.0</b>

(a) Excludes students boarding at school, some patients in hospitals and sanatoria and inmates of reformatories, jails, etc. (b) Includes typing, secretarial studies, data processing. (c) Includes nursing, health therapy, etc. (d) Includes telecommunication, architecture, surveying, drafting, town planning, etc. (e) Includes commerce, business administration, economics, book-keeping, etc. (f) Includes computing, veterinary/agricultural science, chemistry, social studies, social welfare, languages, arts, crafts, music, etc.

**TABLE 8. PERSONS IN THE LABOUR FORCE : EDUCATIONAL ATTAINMENT, LABOUR FORCE STATUS AND FULL-TIME OR PART-TIME STATUS, FEBRUARY 1984**  
( ' 000)

Educational attainment	Employed			Unemployed			Total
	Full-time	Part-time	Total	Looking for full-time work	Looking for part-time work	Total	
<b>MALES</b>							
With post-school qualifications	1,800.8	80.4	1,881.2	115.1	*	118.6	1,999.8
Degree or equivalent	399.6	25.5	425.1	18.1	*	18.9	441.1
Trade, technical level	1,370.3	54.6	1,424.9	94.2	*	96.7	1,521.6
Other	30.9	*	31.2	*	*	*	34.1
Without post-school qualifications	1,960.9	120.4	2,081.3	292.9	8.6	301.6	2,382.9
Attended highest level of secondary school available	418.5	35.8	454.3	55.2	5.3	60.6	514.9
Did not attend highest level of secondary school available	1,534.6	84.4	1,618.9	235.6	*	238.6	1,857.5
Left at age—							
18 years or over	22.2	*	22.9	*	*	4.6	27.6
16 or 17 years	493.7	27.9	521.6	83.1	*	84.4	606.0
14 or 15 years	873.2	44.2	917.5	127.1	*	128.4	1,045.9
13 years or under	145.5	11.4	156.9	21.1	*	21.1	178.0
Never attended school	7.9	*	8.1	*	*	*	10.5
Still at school	*	36.0	37.8	5.4	10.3	15.7	53.5
<b>Total</b>	<b>3,763.6</b>	<b>236.8</b>	<b>4,000.3</b>	<b>413.4</b>	<b>22.4</b>	<b>435.8</b>	<b>4,436.2</b>
<b>FEMALES</b>							
With post-school qualifications	625.3	293.5	918.8	63.3	25.2	88.5	1,007.2
Degree or equivalent	138.9	45.5	184.3	10.2	*	14.2	198.5
Trade, technical level	465.7	238.4	704.1	50.3	20.7	71.1	775.2
Other	20.6	9.7	30.3	*	*	*	33.5
Without post-school qualifications	887.0	512.2	1,399.2	159.2	38.9	198.0	1,597.3
Attended highest level of secondary school available	225.0	108.3	333.3	30.3	11.1	41.4	374.7
Did not attend highest level of secondary school available	658.6	402.9	1,061.5	128.3	27.8	156.1	1,217.6
Left at age—							
18 years or over	11.1	*	14.7	*	*	*	16.4
16 or 17 years	259.4	112.9	372.2	53.7	7.2	60.9	433.1
14 or 15 years	340.3	256.3	596.6	64.0	18.8	82.8	679.4
13 years or under	47.8	30.2	77.9	9.0	*	10.7	88.7
Never attended school	*	*	*	*	*	*	5.0
Still at school	*	46.9	47.7	5.3	10.1	15.4	63.1
<b>Total</b>	<b>1,513.1</b>	<b>852.6</b>	<b>2,365.7</b>	<b>227.8</b>	<b>74.1</b>	<b>301.9</b>	<b>2,667.6</b>
<b>PERSONS</b>							
With post-school qualifications	2,426.1	373.8	2,799.9	178.4	28.7	207.1	3,007.0
Degree or equivalent	538.5	70.9	609.5	28.4	4.7	33.1	642.6
Trade, technical level	1,836.0	293.0	2,129.0	144.6	23.2	167.8	2,296.8
Other	51.5	9.9	61.5	5.4	*	6.2	67.6
Without post-school qualifications	2,847.9	632.6	3,480.5	452.1	47.5	499.6	3,980.2
Attended highest level of secondary school available	643.5	144.1	787.6	85.6	16.4	102.0	889.6
Did not attend highest level of secondary school available	2,193.1	487.3	2,680.4	363.9	30.7	394.7	3,075.0
Left at age—							
18 years or over	33.3	*	37.3	6.0	*	6.3	44.0
16 or 17 years	753.0	140.8	893.8	136.8	8.5	145.3	1,039.2
14 or 15 years	1,213.5	300.5	1,514.0	191.1	20.1	211.2	1,725.3
13 years or under	193.3	41.6	234.9	30.0	*	31.8	266.7
Never attended school	11.3	*	12.5	*	*	*	15.5
Still at school	*	82.9	85.5	10.7	20.4	31.1	116.6
<b>Total</b>	<b>5,276.6</b>	<b>1,089.4</b>	<b>6,366.0</b>	<b>641.2</b>	<b>96.6</b>	<b>737.8</b>	<b>7,103.8</b>

**TABLE 9. EMPLOYED PERSONS : EDUCATIONAL ATTAINMENT AND INDUSTRY, FEBRUARY 1984**  
 (' 000)

Industry division	With post-school qualifications			Attended highest secondary level	Without post-school qualifications		Total (b)	Total (c)
	Degree or equivalent	Trade, technical level	Total (a)		Did not attend highest level of secondary school and left at age (years)			
					16 or over	15 or under		
<b>MALES</b>								
Agriculture, forestry, fishing and hunting	6.9	64.2	73.7	34.0	46.3	145.0	226.5	301.8
Mining	7.2	39.0	46.8	7.5	7.4	25.4	40.3	87.1
Manufacturing	43.9	326.5	376.9	83.4	131.3	250.3	467.7	847.4
Electricity, gas and water	11.4	60.2	72.6	7.4	16.3	33.4	57.1	129.9
Construction	9.5	198.6	209.9	22.9	42.9	99.5	166.6	377.0
Wholesale and retail trade	33.4	248.3	286.1	87.9	119.4	186.2	394.3	709.1
Transport and storage	10.2	104.7	116.7	28.1	43.2	118.7	190.4	307.1
Communication	*	37.2	41.9	14.7	14.5	27.5	56.7	98.5
Finance, property and business services	77.2	89.4	169.5	71.2	44.4	39.3	154.8	325.1
Public administration and defence	41.5	58.8	103.7	34.9	26.2	55.2	117.2	221.0
Community services	169.0	134.0	306.7	27.2	27.3	49.9	105.2	412.1
Recreation, personal and other services	11.6	64.0	76.7	35.1	25.3	44.1	104.5	184.1
<b>Total</b>	<b>425.1</b>	<b>1,424.9</b>	<b>1,881.2</b>	<b>454.3</b>	<b>544.5</b>	<b>1,074.4</b>	<b>2,081.3</b>	<b>4,000.3</b>
<b>FEMALES</b>								
Agriculture, forestry, fishing and hunting	*	24.6	29.2	12.6	14.9	41.8	70.1	100.4
Mining	*	*	*	*	*	*	5.1	9.3
Manufacturing	7.9	61.4	73.4	36.4	52.7	126.8	216.3	290.2
Electricity, gas and water	*	*	5.6	*		6.8	10.5	16.1
Construction	*	14.9	16.5	4.7	7.4	13.8	26.0	42.5
Wholesale and retail trade	13.0	98.0	118.3	81.7	117.7	186.9	386.4	545.7
Transport and storage	*	16.7	19.0	9.1	9.4	17.3	35.8	54.8
Communication	*	5.9	8.6	7.7	6.7	12.5	26.9	35.5
Finance, property and business services	17.7	83.4	104.8	58.5	65.4	57.3	181.1	286.4
Public administration and defence	12.6	33.6	47.8	21.0	17.2	20.3	58.9	107.2
Community services	118.9	292.0	416.1	65.1	52.8	112.0	231.5	648.2
Recreation, personal and other services	6.5	65.8	75.3	30.8	37.9	80.7	150.6	229.4
<b>Total</b>	<b>184.3</b>	<b>704.1</b>	<b>918.8</b>	<b>333.3</b>	<b>387.0</b>	<b>674.5</b>	<b>1,399.2</b>	<b>2,365.7</b>
<b>PERSONS</b>								
Agriculture, forestry, fishing and hunting	9.6	88.8	102.8	46.6	61.1	186.8	296.6	402.2
Mining	7.8	42.4	51.0	9.6	8.0	27.8	45.4	96.4
Manufacturing	51.8	387.9	450.3	119.8	184.0	377.1	684.0	1,137.6
Electricity, gas and water	12.3	64.6	78.3	11.1	20.5	36.0	67.6	146.0
Construction	10.0	213.5	226.4	27.6	50.4	113.2	192.5	419.5
Wholesale and retail trade	46.4	346.3	404.4	169.7	237.0	373.2	780.7	1,254.8
Transport and storage	11.8	121.4	135.7	37.1	52.7	136.0	226.2	361.9
Communication	4.9	43.1	50.5	22.4	21.2	40.0	83.5	134.0
Finance, property and business services	94.9	172.7	274.3	129.6	109.8	96.6	336.0	611.5
Public administration and defence	54.0	92.4	151.5	55.9	43.4	75.5	176.1	328.2
Community services	287.9	425.9	722.7	92.3	80.1	161.9	336.7	1,060.3
Recreation, personal and other services	18.1	129.9	152.1	65.9	63.2	124.8	255.1	413.5
<b>Total</b>	<b>609.5</b>	<b>2,129.0</b>	<b>2,799.9</b>	<b>787.6</b>	<b>931.5</b>	<b>1,748.9</b>	<b>3,480.5</b>	<b>6,366.0</b>

(a) Includes persons with other post-school qualifications. (b) Includes persons who never attended school. (c) Includes persons aged 15 to 20 years still at school.

TABLE 10. EMPLOYED PERSONS : EDUCATIONAL ATTAINMENT AND OCCUPATION, FEBRUARY 1984  
( ' 000)

Occupation group	With post-school qualifications			Attended highest secondary level	Without post-school qualifications			Total (c)
	Degree or equivalent	Trade, technical level	Total (a)		Did not attend highest level of secondary school and left at age (years)		Total (b)	
					16 or over	15 or under		
<b>MALES</b>								
Professional, technical, etc.	312.2	179.3	492.6	39.0	16.8	11.8	67.6	560.6
Administrative, executive and managerial	45.7	145.5	193.1	55.5	40.6	82.2	178.3	371.4
Clerical	27.7	62.2	96.2	114.1	60.8	52.8	227.7	325.2
Sales	9.3	78.7	91.3	43.7	47.3	68.8	160.1	267.4
Farmers, fishermen, timber-getters, etc.	5.1	78.9	87.5	37.4	57.4	166.2	262.2	352.6
Miners, quarrymen, etc.	*	11.6	12.8	*	*	13.4	20.4	33.2
Transport and communication	*	67.9	73.7	19.8	40.0	140.5	200.4	275.6
Tradesmen, production-process workers and labourers, n.e.c.	15.1	722.4	745.9	106.7	242.0	464.9	820.1	1,576.7
Service, sport and recreation	5.9	78.4	88.0	34.9	35.8	73.8	144.6	237.7
<b>Total</b>	<b>425.1</b>	<b>1,424.9</b>	<b>1,881.2</b>	<b>454.3</b>	<b>544.5</b>	<b>1,074.4</b>	<b>2,081.3</b>	<b>4,000.3</b>
<b>FEMALES</b>								
Professional, technical, etc.	133.2	220.2	354.3	39.3	13.1	15.8	68.2	422.5
Administrative, executive and managerial	*	16.0	20.0	10.0	9.5	18.6	38.2	58.2
Clerical	31.4	264.7	309.3	146.5	178.8	184.6	510.1	832.8
Sales	4.6	52.9	62.2	49.7	64.2	112.1	226.0	314.2
Farmers, etc.	*	23.9	27.8	12.5	16.0	44.9	74.6	103.6
Transport and communication	*	8.9	10.6	7.6	9.7	17.0	34.4	45.0
Tradeswomen, production-process workers and labourers, n.e.c.	*	26.8	33.1	23.0	38.3	109.1	171.7	205.6
Service, sport and recreation	6.3	90.4	101.2	44.6	57.2	172.2	275.9	383.3
<b>Total(d)</b>	<b>184.3</b>	<b>704.1</b>	<b>918.8</b>	<b>333.3</b>	<b>387.0</b>	<b>674.5</b>	<b>1,399.2</b>	<b>2,365.7</b>
<b>PERSONS</b>								
Professional, technical, etc.	445.4	399.5	846.9	78.2	30.0	27.6	135.8	983.1
Administrative, executive and managerial	48.8	161.5	213.1	65.6	50.1	100.8	216.5	429.6
Clerical	59.1	326.9	405.5	260.6	239.7	237.4	737.8	1,158.0
Sales	13.8	131.6	153.5	93.5	111.5	181.0	386.2	581.7
Farmers, fishermen, timber-getters, etc.	8.0	102.8	115.3	49.9	73.4	211.1	336.8	456.2
Miners, quarrymen, etc.	*	11.7	13.0	*	*	13.4	20.6	33.5
Transport and communication	*	76.9	84.4	27.5	49.7	157.6	234.7	320.6
Tradesmen, production-process workers and labourers, n.e.c.	17.4	749.2	779.0	129.7	280.2	574.0	991.8	1,782.3
Service, sport and recreation	12.2	168.8	189.3	79.6	93.0	246.0	420.5	621.0
<b>Total</b>	<b>609.5</b>	<b>2,129.0</b>	<b>2,799.9</b>	<b>787.6</b>	<b>931.5</b>	<b>1,748.9</b>	<b>3,480.5</b>	<b>6,366.0</b>

(a) Includes persons with other post-school qualifications. (b) Includes persons who never attended school. (c) Includes persons aged 15 to 20 years still at school. (d) Includes miners, etc.

**TABLE 11. EMPLOYED PERSONS(a) : EDUCATIONAL ATTAINMENT, INDUSTRY AND OCCUPATION, FEBRUARY 1984**  
(\* 000)

Occupation group	Industry division										Total	
	Agriculture, forestry, fishing and hunting	Mining	Manufacturing	Construction	Wholesale and retail trade	Transport and storage	Finance, property and business services	Community services	Public administration and defence	Recreation, personal and other services		Other industries(b)
<b>WITH POST-SCHOOL QUALIFICATIONS</b>												
Professional, technical, etc.	*	9.8	57.6	11.1	31.2	6.9	99.6	532.9	43.9	16.9	33.3	846.9
Administrative, executive and managerial	*	*	44.5	14.2	66.0	9.3	29.5	10.7	16.8	18.7	*	213.1
Clerical	*	*	43.4	14.9	50.1	23.2	96.9	76.8	61.3	17.1	15.7	405.5
Sales	*	*	14.7	*	105.4	*	24.2	*	*	*	*	153.5
Farmers, fishermen, timber-getters, etc.	91.3	*	*	*	*	*	*	*	*	8.1	*	115.3
Miners, quarrymen and related workers	*	11.0	*	*	*	*	*	*	*	*	*	13.0
Transport and communication	*	*	6.0	*	7.6	50.1	*	*	*	*	10.0	84.4
Tradesmen, production-process workers and labourers, n.e.c.	*	21.8	276.9	179.5	135.3	39.8	10.2	21.7	19.0	6.9	64.9	779.0
Service, sport and recreation	*	*	4.9	*	5.1	4.5	12.6	73.3	*	80.4	*	189.3
<b>Total</b>	<b>102.8</b>	<b>51.0</b>	<b>450.3</b>	<b>226.4</b>	<b>404.4</b>	<b>135.7</b>	<b>274.3</b>	<b>722.7</b>	<b>151.5</b>	<b>152.1</b>	<b>128.8</b>	<b>2,799.9</b>
<b>WITHOUT POST-SCHOOL QUALIFICATIONS BUT ATTENDED HIGHEST LEVEL OF SECONDARY SCHOOL AVAILABLE</b>												
Professional, technical, etc.	*	*	11.6	*	*	*	13.3	33.7	5.1	6.1	*	78.2
Administrative, executive and managerial	*	*	9.1	*	27.8	*	11.4	*	*	7.6	*	65.6
Clerical	*	*	24.9	4.8	33.5	13.9	89.7	25.1	42.9	7.0	15.1	260.6
Sales	*	*	5.2	*	76.8	*	6.4	*	*	*	*	93.5
Farmers, fishermen, timber-getters, etc.	44.0	*	*	*	*	*	*	*	*	*	*	49.9
Transport and communication	*	*	*	*	*	12.9	*	*	*	*	6.8	27.5
Tradesmen, production-process workers and labourers, n.e.c.	*	*	64.3	19.0	21.5	*	*	*	*	*	8.6	129.7
Service, sport and recreation	*	*	*	*	*	*	5.6	26.8	*	36.2	*	79.6
<b>Total(c)</b>	<b>46.6</b>	<b>9.6</b>	<b>119.8</b>	<b>27.6</b>	<b>169.7</b>	<b>37.1</b>	<b>129.6</b>	<b>92.3</b>	<b>55.9</b>	<b>65.9</b>	<b>33.5</b>	<b>787.6</b>
<b>WITHOUT POST-SCHOOL QUALIFICATIONS AND DID NOT ATTEND HIGHEST LEVEL OF SECONDARY SCHOOL AVAILABLE(d)</b>												
Professional, technical, etc.	*	*	7.2	*	*	*	7.2	24.7	*	5.6	*	57.6
Administrative, executive and managerial	*	*	26.0	7.3	70.6	4.8	17.3	*	*	17.0	*	150.9
Clerical	*	*	61.1	19.7	101.7	32.1	118.8	52.0	43.3	21.6	21.3	477.0
Sales	*	*	17.2	*	250.9	*	12.1	*	*	5.8	*	292.4
Farmers, fishermen, timber-getters, etc.	238.7	*	*	*	8.0	*	*	7.7	9.2	11.7	*	284.5
Miners, quarrymen and related workers	*	15.9	*	*	*	*	*	*	*	*	*	17.5
Transport and communication	*	*	21.3	6.0	23.9	98.0	5.0	6.5	10.1	*	31.2	207.3
Tradesmen, production-process workers and labourers, n.e.c.	*	11.0	413.1	121.9	136.2	43.1	7.2	18.3	38.0	7.0	55.2	854.2
Service, sport and recreation	*	*	12.7	*	15.4	6.1	37.5	127.7	13.5	118.5	*	339.0
<b>Total</b>	<b>248.0</b>	<b>35.8</b>	<b>561.1</b>	<b>163.6</b>	<b>610.2</b>	<b>188.6</b>	<b>206.4</b>	<b>242.1</b>	<b>118.9</b>	<b>188.0</b>	<b>117.7</b>	<b>2,680.4</b>

(a) Excludes persons aged 15 to 20 years who are still attending school. (b) Comprises electricity, gas and water, and communication. (c) Includes miners, etc. (d) Excludes persons who never attended school.

TABLE 12. EMPLOYED PERSONS : EDUCATIONAL ATTAINMENT AND AGE, FEBRUARY 1984

Educational attainment	Age group (years)						Total	per cent
	15-19	20-24	25-34	35-44	45-54	55 and over		
	— '000—							
<b>MALES</b>								
With post-school qualifications	25.1	206.3	604.4	508.3	342.0	195.1	1,881.2	47.0
Degree or equivalent	*	31.0	162.4	128.6	60.4	42.8	425.1	10.6
Trade, technical level	21.9	171.7	434.9	370.4	275.1	151.0	1,424.9	35.6
Other	6.9		7.1	9.4	6.5	*	31.2	0.8
Without post-school qualifications(a)	246.1	304.0	496.7	411.8	351.5	271.2	2,081.3	52.0
Attended highest level of secondary school available	60.7	106.0	147.1	73.8	37.0	29.8	454.3	11.4
Did not attend highest level of secondary school available	185.2	198.0	348.0	336.8	311.6	239.3	1,618.9	40.5
Left at age—								
18 years or over	6.0		6.9	6.8	*	*	22.9	0.6
16 or 17 years	101.7	116.3	144.5	85.7	45.7	27.9	521.6	13.0
14 or 15 years	81.7	75.7	183.0	207.8	207.8	161.6	917.5	22.9
13 years or under	*	*	13.7	36.5	55.6	49.2	156.9	3.9
Still at school	37.7	*	..	..	..	..	37.8	0.9
<b>Total</b>	<b>308.9</b>	<b>510.4</b>	<b>1,101.1</b>	<b>920.1</b>	<b>693.5</b>	<b>466.3</b>	<b>4,000.3</b>	<b>100.0</b>
<b>FEMALES</b>								
With post-school qualifications	45.2	169.5	302.4	235.5	115.7	50.5	918.8	38.8
Degree or equivalent	*	26.4	84.9	46.0	16.9	9.9	184.3	7.8
Trade, technical level	41.8	138.8	208.9	181.7	93.9	39.0	704.1	29.8
Other	7.5		8.6	7.8	4.9	*	30.3	1.3
Without post-school qualifications(a)	189.1	255.6	296.9	315.0	234.2	108.5	1,399.2	59.1
Attended highest level of secondary school available	67.5	98.5	73.8	46.3	30.5	16.6	333.3	14.1
Did not attend highest level of secondary school available	121.6	157.0	221.8	267.8	202.4	90.8	1,061.5	44.9
Left at age—								
18 years or over	*	5.2	*	*	*	*	14.7	0.6
16 or 17 years	68.5	94.3	94.3	68.2	34.2	12.8	372.2	15.7
14 or 15 years	51.3	56.4	113.9	174.0	137.9	63.0	596.6	25.2
13 years or under	*	*	9.4	23.1	29.3	14.5	77.9	3.3
Still at school	47.4	*	..	..	..	..	47.7	2.0
<b>Total</b>	<b>281.7</b>	<b>425.4</b>	<b>599.3</b>	<b>550.5</b>	<b>349.9</b>	<b>158.9</b>	<b>2,365.7</b>	<b>100.0</b>
<b>PERSONS</b>								
With post-school qualifications	70.3	375.9	906.7	743.8	457.6	245.6	2,799.9	44.0
Degree or equivalent	*	57.4	247.3	174.6	77.3	52.6	609.5	9.6
Trade, technical level	63.7	310.4	643.8	552.0	369.0	190.0	2,129.0	33.4
Other	6.3	8.0	15.7	17.2	11.4	*	61.5	1.0
Without post-school qualifications	435.2	559.5	793.6	726.7	585.7	379.7	3,480.5	54.7
Attended highest level of secondary school available	128.2	204.5	220.9	120.1	67.6	46.4	787.6	12.4
Did not attend highest level of secondary school available	306.8	355.0	569.8	604.6	514.0	330.2	2,680.4	42.1
Left at age—								
18 years or over	*	9.7	11.1	9.4	*	*	37.7	0.6
16 or 17 years	170.2	210.5	238.8	153.8	79.9	40.7	893.8	14.0
14 or 15 years	133.0	132.1	296.8	381.8	345.7	224.6	1,514.0	23.8
13 years or under	*	*	23.1	59.6	84.9	63.7	234.9	3.7
Never attended school	*	*	*	*	*	*	12.5	0.2
Still at school	85.1	*	..	..	..	..	85.5	1.3
<b>Total</b>	<b>590.6</b>	<b>935.9</b>	<b>1,700.4</b>	<b>1,470.6</b>	<b>1,043.4</b>	<b>625.2</b>	<b>6,366.0</b>	<b>100.0</b>

(a) Includes persons who never attended school.

TABLE 13. UNEMPLOYED PERSONS : EDUCATIONAL ATTAINMENT AND AGE, FEBRUARY 1984

Educational attainment	Age group (years)						Total	per cent
	15-19	20-24	25-34	35-44	45-54	55 and over		
	— '000—							
<b>MALES</b>								
With post-school qualifications(a)	5.1	24.5	37.1	23.3	17.2	11.6	118.6	27.2
Degree or equivalent	*	4.9	9.3	*	*	*	18.9	4.3
Trade, technical level	*	19.1	27.4	20.1	15.5	11.1	96.7	22.2
Without post-school qualifications(b)	83.0	76.5	63.4	31.7	27.4	19.6	301.6	69.2
Attended highest level of secondary school available	21.2	18.9	12.1	*	*	*	60.6	13.9
Did not attend highest level of secondary school available	61.8	57.6	51.3	27.1	22.8	18.0	238.6	54.7
Left school at age—								
16 years or over	32.2	27.4	17.0	6.3	*	*	89.0	20.4
15 years or under	29.5	30.2	34.3	20.9	19.2	15.5	149.5	34.3
Still at school	15.7	*	..	..	..	..	15.7	3.6
<b>Total</b>	<b>103.7</b>	<b>101.0</b>	<b>100.4</b>	<b>54.9</b>	<b>44.6</b>	<b>31.2</b>	<b>435.8</b>	<b>100.0</b>
<b>FEMALES</b>								
With post-school qualifications(a)	14.8	18.4	33.3	17.0	*	*	88.5	29.3
Degree or equivalent	*	*	7.3	*	*	*	14.2	4.7
Trade, technical level	13.5	13.1	25.1	14.9	*	*	71.1	23.5
Without post-school qualifications(b)	74.0	42.2	38.3	27.8	11.0	4.7	198.0	65.6
Attended highest level of secondary school available	17.7	9.7	7.9	*	*	*	41.4	13.7
Did not attend highest level of secondary school available	56.3	32.5	30.4	23.6	9.4	*	156.1	51.7
Left school at age—								
16 years or over	28.8	16.8	9.4	*	*	*	62.6	20.7
15 years or under	27.5	15.7	21.0	19.8	6.8	*	93.5	31.0
Still at school	15.3	*	..	..	..	..	15.4	5.1
<b>Total</b>	<b>104.1</b>	<b>60.7</b>	<b>71.6</b>	<b>44.8</b>	<b>14.6</b>	<b>6.1</b>	<b>301.9</b>	<b>100.0</b>
<b>PERSONS</b>								
With post-school qualifications(a)	19.9	42.8	70.4	40.2	20.8	13.0	207.1	28.1
Degree or equivalent	*	9.4	16.6	4.9	*	*	33.1	4.5
Trade, technical level	17.0	32.2	52.5	35.0	18.7	12.4	167.8	22.8
Without post-school qualifications(b)	157.0	118.7	101.6	59.5	38.4	24.3	499.6	67.7
Attended highest level of secondary school available	39.0	28.6	20.0	7.9	4.7	*	102.0	13.8
Did not attend highest level of secondary school available	118.1	90.1	81.6	50.8	32.2	21.9	394.7	53.5
Left school at age—								
16 years or over	61.0	44.2	26.4	10.1	6.2	*	151.6	20.6
15 years or under	57.1	45.9	55.2	40.7	26.0	18.1	243.0	32.9
Still at school	30.9	*	..	..	..	..	31.1	4.2
<b>Total</b>	<b>207.8</b>	<b>161.7</b>	<b>172.0</b>	<b>99.7</b>	<b>59.2</b>	<b>37.3</b>	<b>737.8</b>	<b>100.0</b>

(a) Includes a small number of persons with other post-school qualifications. (b) Includes persons who never attended school.

**TABLE 14. UNEMPLOYED PERSONS : EDUCATIONAL ATTAINMENT AND DURATION OF CURRENT PERIOD OF UNEMPLOYMENT, FEBRUARY 1984**

<i>Educational attainment</i>	<i>Duration of current period of unemployment (weeks)</i>						<i>Total</i>	<i>Average (mean) duration</i>	<i>Median duration</i>
	<i>1 and under 4</i>	<i>4 and under 8</i>	<i>8 and under 13</i>	<i>13 and under 26</i>	<i>26 and under 52</i>	<i>52 and over</i>			
	— '000—							—weeks—	
<b>MALES</b>									
With post-school qualifications(a)	14.6	18.0	13.5	20.0	19.6	33.0	118.6	35.3	19.1
Degree or equivalent	5.2		7.0		*	4.5	18.9	34.7	12.1
Trade, technical level	12.4	14.3	9.1	16.5	16.6	27.9	96.7	35.3	21.1
Without post-school qualifications(b)	22.9	33.4	35.3	40.1	47.6	122.3	301.6	51.2	32.1
Attended highest level of secondary school available	6.0	8.8	12.5	7.6	9.8	15.8	60.6	37.5	15.0
Did not attend highest level of secondary school available	16.5	24.3	22.8	32.1	37.7	105.2	238.6	54.4	39.1
Left at age—									
16 or over	7.6	8.7	11.4	11.9	13.6	35.9	89.0	46.2	32.0
15 or under	8.9	15.6	11.4	20.2	24.1	69.3	149.5	59.3	44.0
Still at school	6.7		5.8		*	*	15.7	16.5	9.0
<b>Total</b>	<b>40.8</b>	<b>54.8</b>	<b>52.3</b>	<b>62.4</b>	<b>68.2</b>	<b>157.4</b>	<b>435.8</b>	<b>45.6</b>	<b>26.1</b>
<b>FEMALES</b>									
With post-school qualifications(a)	24.9	13.7	14.9	11.1	8.0	15.9	88.5	25.0	9.1
Degree or equivalent	7.0		4.8		*	*	14.2	11.7	8.0
Trade, technical level	20.6	10.4	10.8	9.0	6.1	14.2	71.1	26.6	9.0
Without post-school qualifications(b)	35.8	22.8	26.6	27.9	25.2	59.7	198.0	43.3	16.1
Attended highest level of secondary school available	7.5	5.8	8.7	7.2	*	9.6	41.4	32.9	12.0
Did not attend highest level of secondary school available	28.3	17.0	17.7	20.7	22.3	50.0	156.1	45.9	18.1
Left at age—									
16 or over	8.1	8.6	9.6	9.8	7.8	18.7	62.6	41.1	16.1
15 or under	20.3	8.4	8.1	11.0	14.5	31.3	93.5	49.2	23.1
Still at school	5.4		6.3	*	*	*	15.4	13.9	9.0
<b>Total</b>	<b>64.5</b>	<b>38.1</b>	<b>47.8</b>	<b>39.9</b>	<b>35.0</b>	<b>76.7</b>	<b>301.9</b>	<b>36.4</b>	<b>13.0</b>
<b>PERSONS</b>									
With post-school qualifications(a)	39.5	31.7	28.3	31.2	27.6	48.8	207.1	30.9	13.1
Degree or equivalent	5.9	6.4	7.7	4.1	4.1	5.0	33.1	24.9	10.1
Trade, technical level	33.0	24.7	19.9	25.5	22.7	42.0	167.8	31.6	15.0
Without post-school qualifications(b)	58.7	56.2	61.9	68.0	72.8	182.0	499.6	48.1	26.0
Attended highest level of secondary school available	13.5	14.7	21.2	14.9	12.4	25.4	102.0	35.6	13.0
Did not attend highest level of secondary school available	44.8	41.3	40.5	52.8	60.0	155.2	394.7	51.1	28.1
Left at age—									
16 or over	15.7	17.3	21.0	21.7	21.4	54.6	151.6	44.1	26.0
15 or under	29.2	24.0	19.5	31.1	38.7	100.6	243.0	55.4	32.1
Still at school	7.2	5.0	9.8	5.9		*	31.1	15.2	9.0
<b>Total</b>	<b>105.3</b>	<b>92.9</b>	<b>100.0</b>	<b>102.3</b>	<b>103.2</b>	<b>234.0</b>	<b>737.8</b>	<b>41.9</b>	<b>19.1</b>

(a) Includes a small number of persons with other post-school qualifications. (b) Includes persons who never attended school.



TABLE 15. PERSONS NOT IN THE LABOUR FORCE : EDUCATIONAL ATTAINMENT AND AGE, FEBRUARY 1984

Educational attainment	Age group (years)						Total	per cent
	15-19	20-24	25-34	35-44	45-54	55 and over		
	— '000—							
<b>MALES</b>								
With post-school qualifications	*	9.6	17.5	13.1	17.8	239.1	297.4	24.0
Degree or equivalent	*	5.1	5.8	*	*	35.8	49.0	4.0
Trade, technical level		4.6	11.7	11.8	16.6	199.5	244.3	19.7
Other	*	*	*	*	*	*	*	*
Without post-school qualifications(a)	39.3	35.6	27.8	28.1	44.3	579.2	754.2	60.9
Attended highest level of secondary school available	20.7	23.0	6.8	*	*	46.7	103.7	8.4
Did not attend highest level of secondary school available	18.6	12.5	20.5	24.1	40.3	526.1	642.0	51.9
Left at age—								
18 years or over	*	*	*	*	*	*	*	*
16 or 17 years	8.4	6.1	5.8	4.3	4.6	39.7	68.8	5.6
14 or 15 years	9.5	5.5	13.6	13.5	25.7	340.1	408.0	33.0
13 years or under	*	*	*	5.7	10.0	144.1	161.8	13.1
Still at school	185.4	*	..	..	..	..	186.0	15.0
<b>Total</b>	<b>225.0</b>	<b>45.7</b>	<b>45.3</b>	<b>41.2</b>	<b>62.1</b>	<b>818.3</b>	<b>1,237.5</b>	<b>100.0</b>
<b>FEMALES</b>								
With post-school qualifications	5.1	39.5	191.9	125.9	78.1	192.2	632.7	20.1
Degree or equivalent	*	5.1	26.8	17.4	4.6	18.0	71.9	2.3
Trade, technical level	*	31.8	158.1	104.3	67.9	166.5	532.9	16.9
Other	*	*	7.1	*	5.5	7.7	27.9	0.9
Without post-school qualifications	66.9	137.3	385.5	322.7	311.3	1,126.8	2,350.5	74.7
Attended highest level of secondary school available	29.0	29.8	53.7	35.5	27.7	106.1	281.8	9.0
Did not attend highest level of secondary school available	37.5	106.1	330.1	284.7	280.3	1,004.9	2,043.6	64.9
Left at age—								
18 years or over	*	*	*	*	*	*	12.8	0.4
16 or 17 years	19.5	50.1	131.3	62.2	38.6	103.0	404.7	12.9
14 or 15 years	17.0	51.6	177.7	189.8	191.7	695.0	1,322.8	42.0
13 years or under	*	*	16.7	30.3	49.2	204.2	303.2	9.6
Never attended school	*	*	*	*	*	15.8	25.1	0.8
Still at school	164.0	*	..	..	..	..	164.0	5.2
<b>Total</b>	<b>235.9</b>	<b>176.9</b>	<b>577.4</b>	<b>448.6</b>	<b>389.4</b>	<b>1,319.0</b>	<b>3,147.1</b>	<b>100.0</b>
<b>PERSONS</b>								
With post-school qualifications	5.3	49.2	209.5	139.0	95.9	431.3	930.1	21.2
Degree or equivalent	*	10.2	32.6	18.7	5.6	53.8	120.9	2.8
Trade, technical level	4.6	36.1	169.8	116.1	84.5	366.1	777.2	17.7
Other	*	*	7.1	*	5.7	11.5	32.0	0.7
Without post-school qualifications	106.2	172.9	413.2	350.7	355.7	1,706.0	3,104.7	70.8
Attended highest level of secondary school available	49.7	52.8	60.5	38.4	31.3	152.8	385.5	8.8
Did not attend highest level of secondary school available	56.1	118.6	350.6	308.8	320.7	1,530.9	2,685.6	61.2
Left at age—								
18 years or over	*	*	7.5	*	*	4.8	16.1	0.4
16 or 17 years	27.9	56.2	137.1	66.5	43.2	142.7	473.5	10.8
14 or 15 years	26.5	57.2	191.3	203.3	217.5	1,035.1	1,730.8	39.5
13 years or under	*	*	17.8	36.0	59.2	348.3	465.1	10.6
Never attended school	*	*	5.8	*	*	22.2	33.6	0.8
Still at school	349.4	*	..	..	..	..	349.9	8.0
<b>Total</b>	<b>460.9</b>	<b>222.6</b>	<b>622.7</b>	<b>489.7</b>	<b>451.5</b>	<b>2,137.3</b>	<b>4,384.7</b>	<b>100.0</b>

(a) Includes persons who never attended school.

**TABLE 16. PERSONS NOT IN THE LABOUR FORCE : EDUCATIONAL ATTAINMENT, MAJOR ACTIVITY WHILE OUT OF THE LABOUR FORCE AND WHETHER IN THE LABOUR FORCE IN THE LAST TWELVE MONTHS, FEBRUARY 1984 ('000)**

	Major activity while out of the labour force							Not asked major activity	Total
	Kept house	Studying	Retired, voluntarily inactive	Own illness, injury	Permanently unable to work	Unpaid voluntary work	Other activity		
<b>IN THE LABOUR FORCE IN THE LAST TWELVE MONTHS</b>									
With post-school qualifications(a)	120.0	10.9	38.2	11.2	*	*	4.7	25.9	220.7
Degree or equivalent	16.7	6.5	8.1	*	*	*	*	*	39.0
Trade, technical level	98.6	*	29.8	10.4	*	*	*	21.7	174.7
Without post-school qualifications(b)	204.1	41.0	53.3	29.7	*	*	11.3	42.9	391.0
Attended highest level of secondary school available	24.6	31.4	8.4	*	*	*	*	6.0	76.1
Did not attend highest level of secondary school available	179.1	9.5	44.9	26.7	*	*	10.6	36.9	314.0
Left at age—									
16 years or over	60.5	7.4	7.8	7.3	*	*	*	9.1	98.2
15 years or under	118.6	*	37.2	19.3	*	*	6.5	27.8	215.8
Still at school	*	61.2	*	*	*	*	*	5.3	67.4
<b>Total</b>	<b>324.1</b>	<b>113.0</b>	<b>92.1</b>	<b>41.0</b>	<b>*</b>	<b>*</b>	<b>16.3</b>	<b>74.1</b>	<b>679.1</b>
Males	*	61.0	72.1	26.2	*	*	9.4	29.0	208.8
Females	320.0	52.0	20.0	14.8	*	*	7.0	45.1	470.3
<b>NOT IN THE LABOUR FORCE IN THE LAST TWELVE MONTHS</b>									
With post-school qualifications(a)	428.8	16.2	207.9	24.4	12.1	16.2	*	..	709.4
Degree or equivalent	39.4	8.6	28.5	*	*	*	*	..	81.9
Trade, technical level	371.1	6.0	176.0	22.1	11.5	13.1	*	..	602.5
Without post-school qualifications	1,847.8	69.6	621.1	86.1	52.2	23.8	12.7	..	2,713.7
Attended highest level of secondary school available	187.0	49.2	57.5	7.2	*	*	*	..	309.3
Did not attend highest level of secondary school available	1,644.4	20.0	555.1	76.2	45.5	19.4	11.1	..	2,371.6
Left at age—									
16 years or over	313.0	11.2	46.1	8.5	6.0	*	*	..	391.5
15 years or under	1,331.4	8.8	509.0	67.6	39.5	15.6	8.2	..	1,980.1
Never attended school	16.4	*	8.6	6.1	*	*	*	..	32.7
Still at school	*	281.5	*	*	*	*	*	..	282.6
<b>Total</b>	<b>2,277.6</b>	<b>367.3</b>	<b>829.1</b>	<b>110.5</b>	<b>64.3</b>	<b>40.0</b>	<b>16.4</b>	<b>..</b>	<b>3,705.6</b>
Males	30.1	186.8	668.9	76.9	46.8	10.2	8.7	..	1,028.8
Females	2,247.6	180.5	160.2	33.6	17.4	29.8	7.7	..	2,676.8
<b>TOTAL</b>									
With post-school qualifications	548.8	27.1	246.2	35.6	12.4	16.6	8.4	25.9	930.1
Degree or equivalent	56.1	15.1	36.6	*	*	*	*	*	120.9
Trade, technical level	469.8	10.0	205.8	32.5	11.8	13.2	6.8	21.7	777.2
Other	22.9	*	*	*	*	*	*	*	32.0
Without post-school qualifications	2,051.9	110.5	674.4	115.8	52.7	24.2	24.0	42.9	3,104.7
Attended highest level of secondary school available	211.5	80.6	65.9	9.9	*	5.5	*	6.0	385.5
Did not attend highest level of secondary school available	1,823.5	29.5	600.0	102.8	45.6	19.9	21.6	36.9	2,685.6
Left at age—									
16 years or over	373.5	18.6	53.9	15.9	6.0	*	6.9	9.1	489.7
15 years or under	1,450.0	10.9	546.1	86.9	39.7	16.1	14.7	27.8	2,195.9
Never attended school	16.9	*	8.6	*	*	*	*	*	33.6
Still at school	*	342.7	*	*	*	*	*	5.3	349.9
<b>Total</b>	<b>2,601.7</b>	<b>480.3</b>	<b>921.2</b>	<b>151.5</b>	<b>65.1</b>	<b>40.9</b>	<b>32.7</b>	<b>74.1</b>	<b>4,384.7</b>
Males	34.1	247.8	741.0	103.2	47.5	10.4	18.1	29.0	1,237.5
Females	2,567.6	232.5	180.2	48.3	17.5	30.5	14.6	45.1	3,147.1

(a) Includes persons with other post-school qualifications. (b) Includes persons who never attended school.

## TECHNICAL NOTE

### Estimation procedure

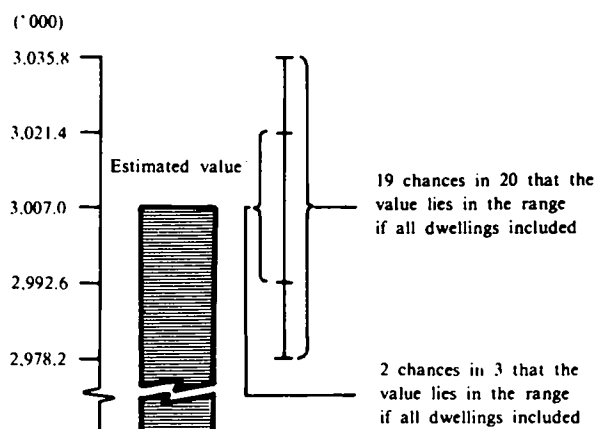
The estimates are derived from the population survey by use of a ratio estimation procedure which ensures that the estimates conform to an independently estimated distribution of the population for each capital city and remainder of State by age and sex, rather than to the corresponding distribution within the sample itself.

### Reliability of the estimates

2. Since the estimates in this publication are based on information obtained from occupants of a sample of dwellings, they are subject to sampling variability; that is, they may differ from the figures that would have been produced if all dwellings had been included in the survey. One measure of the likely difference is given by the *standard error*, which indicates the extent to which an estimate might have varied by chance because only a sample of dwellings was included. There are about two chances in three that a sample estimate will differ by less than one standard error from the figure that would have been obtained if all dwellings had been included, and about nineteen chances in twenty that the difference will be less than two standard errors. Another measure of the likely difference is the *relative standard error*, which is obtained by expressing the standard error as a percentage of the estimate.

3. Space does not allow for the separate indication of the standard errors of all estimates in this publication. A table of standard errors for general application is given on the following page. Since they are averages based on calculations for a limited number of past surveys over a wide range of labour force characteristics these figures will not give a precise measure of the standard error of a particular estimate but they will provide an indication of its magnitude.

4. An example of the calculation and the use of standard errors in relation to estimates of persons is as follows. From Table 1 the estimated number of persons in the labour force with post-school qualifications is 3,007,000. Since this estimate is between 2,000,000 and 5,000,000 the standard error for Australia will be between 13,000 and 17,050 in the standard error table and can be approximated as 14,400 (rounded to the nearest 100). Therefore there are about two chances in three that the value that would have been produced if all dwellings had



been included in the survey will fall in the range 2,992,600 to 3,021,400 and about nineteen chances in twenty that the value will fall within the range 2,978,200 and 3,035,800. This example is illustrated in the diagram.

5. As can be seen from the standard error table, *the smaller the estimate the higher is the relative standard error*. Very small estimates are thus subject to such high standard errors (relative to the size of the estimate) as to detract seriously from their value for most reasonable uses. In the tables in this publication, estimates less than the lowest levels shown in the standard error table have not been published. Although figures for these small components can in some cases be derived by subtraction, they should not be regarded as reliable.

6. Proportions and percentages formed from the ratio of two estimates are also subject to sampling errors. The size of the error depends on the accuracy of both the numerator and the denominator. The formula for the relative standard error (RSE) of a proportion is given below:

$$RSE(x/y) = \sqrt{[RSE(x)]^2 - [RSE(y)]^2}$$

7. Considering the example from paragraph 4 above, these persons as a proportion of the total population with post-school qualifications (3,937,100) gives the participation rate — 76.4 per cent. The standard error for 3,937,100 is approximately 15,600 so the relative standard error is 0.4 per cent. The relative standard error for 3,007,000 is 0.5 per cent. Applying the above formula, the relative standard error of the proportion is  $\sqrt{(0.5)^2 - (0.4)^2}$  or 0.3 per cent, giving a standard error for the proportion (76.4 per cent) of 0.2 percentage points. Therefore, there are about two chances in three that the proportion, i.e. participation rate, for persons with post-school qualifications is between 76.2 per cent and 76.6 per cent and nineteen chances in twenty the proportion is within the range 76.0 per cent to 76.8 per cent.

8. Published figures may also be used to estimate the difference between two survey estimates (of numbers or percentages). Such a figure is itself an estimate and is therefore subject to sampling error. The sampling error of the difference between two estimates depends on their standard errors and the relationship (correlation) between them. An approximate standard error (SE) of the difference between two estimates (x-y) may be calculated by the following formula:

$$SE(x-y) = \sqrt{[SE(x)]^2 + [SE(y)]^2}$$

While this formula will only be exact for differences between separate and uncorrelated characteristics or sub-populations, it is expected to provide a good approximation for all differences likely to be of interest in this publication.

9. The imprecision due to sampling variability, which is measured by the standard error, should not be confused with inaccuracies that may occur because of imperfections in reporting by interviewers and respondents and errors made in the coding and processing of data. Inaccuracies of this kind are referred to as the *non-sampling error*, and they may occur in any enumeration, whether it be a full count or a sample.

## STANDARD ERRORS OF ESTIMATES

Size of estimate	N.S.W.	Vic.	Qld	S.A.	W.A.	Tas.	N.T.	A.C.T.	Australia	
									—number—	Relative standard error (per cent)
1.500				550	600	350	550	550		
2.300				650	650	450	650	600		
3.000				850	700	500	700	600		
3.500			900	700	750	500	700	650		
4.000			950	750	800	550	750	700	1100	24.4
4.500	1250	1250	1000	800	850	550	800	700	1200	24.0
5.000	1350	1350	1050	850	900	600	850	750	1300	21.7
6.000	1450	1400	1150	900	950	650	900	800	1400	20.0
7.000	1700	1650	1350	1050	1100	750	1050	850	1650	16.5
10.000	2350	2200	1750	1350	1450	950	1350	1050	2250	11.3
50.000	3400	3100	2500	1850	2000	1250	1900	1300	3400	6.8
100.000	4450	4000	3250	2350	2500	1450	2450	1450	4500	4.5
200.000	5750	5050	4100	2950	3100	1750		1600	5900	2.9
300.000	6650	5700	4700	3300	3500				6850	2.3
500.000	7900	6650	5550	3850	4000				8250	1.6
1.000.000	9800	8050	6850						10400	1.0
2.000.000	12000	9650							13000	0.7
5.000.000	15350	11850							17050	0.3
10.000.000									20550	0.2

— Estimates below the levels indicated have not been published, see paragraph 5 above.